

# STANDARD RANGE

Street lighting solutions — AVIKA

January, 2023

# AVIKA: presentation

Discover our solution for street-lighting : AVIKA  
This range is composed of three references with their mask for better light control.



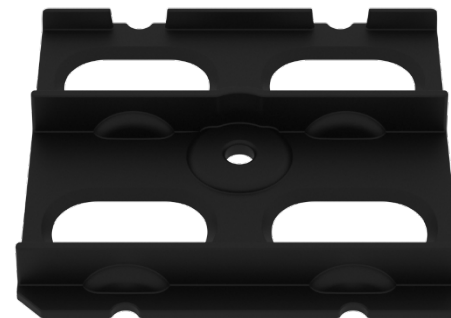
AVIKA 2x2 5050 T3S



AVIKA 2x2 5050 T2S



AVIKA 2x2 5050 T3S M



AVIKA 2x2 5050 T2S M

# AVIKA specifications

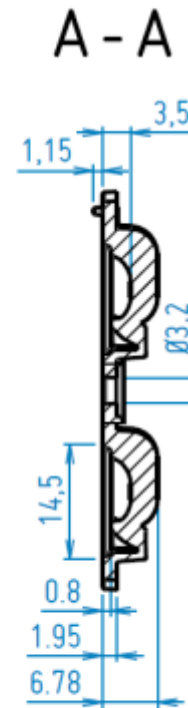
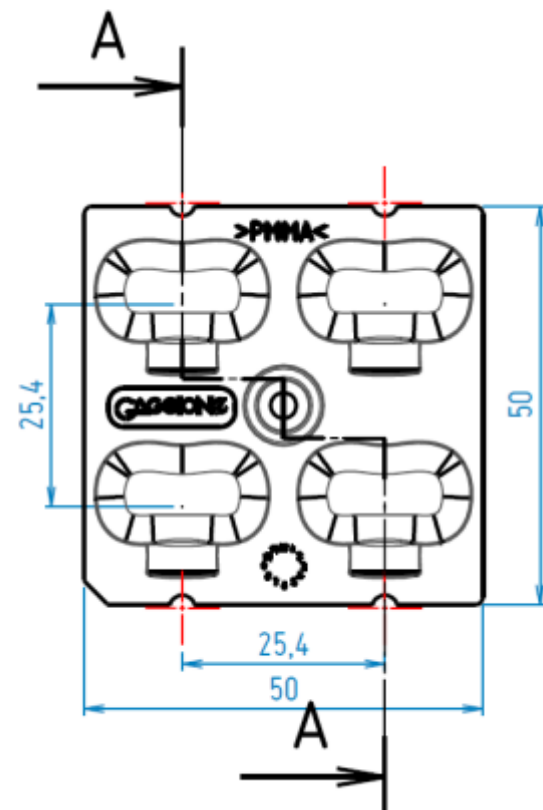
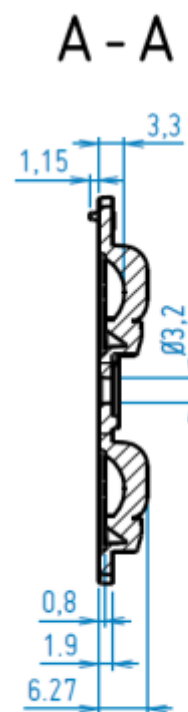
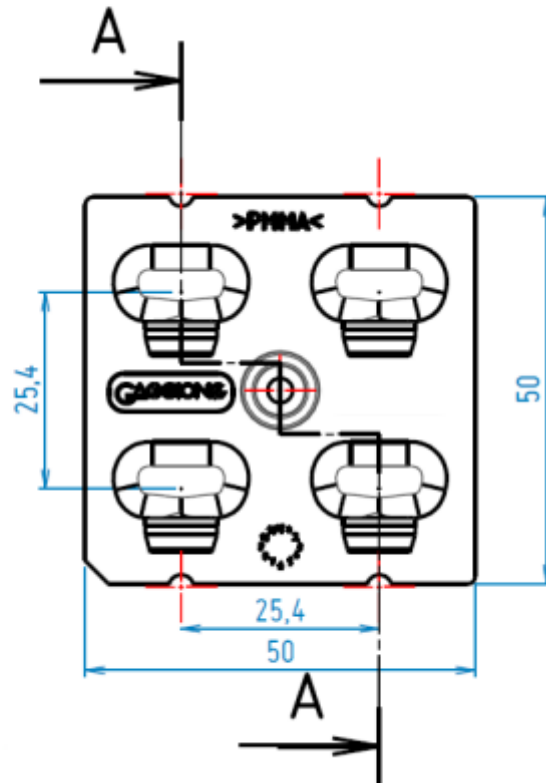
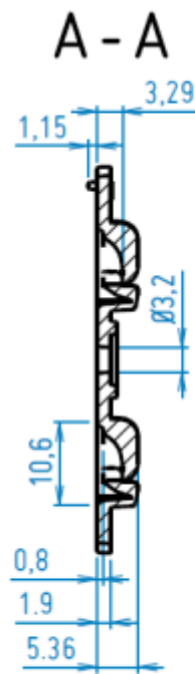
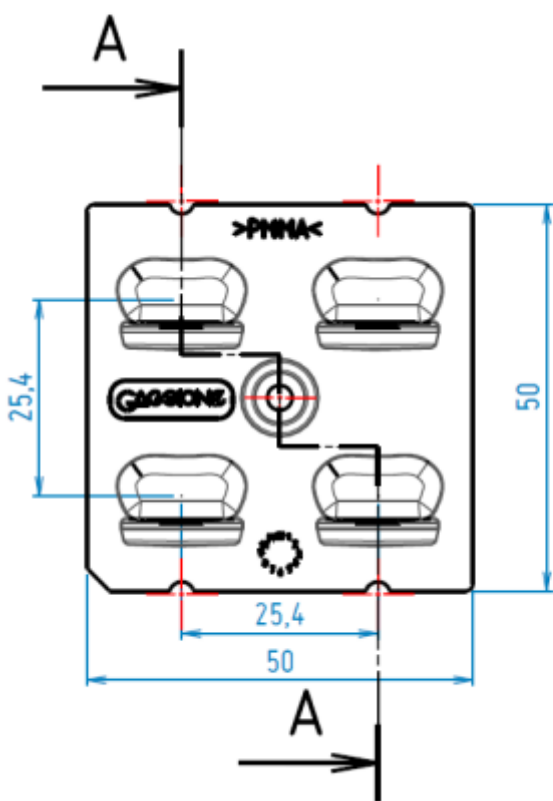
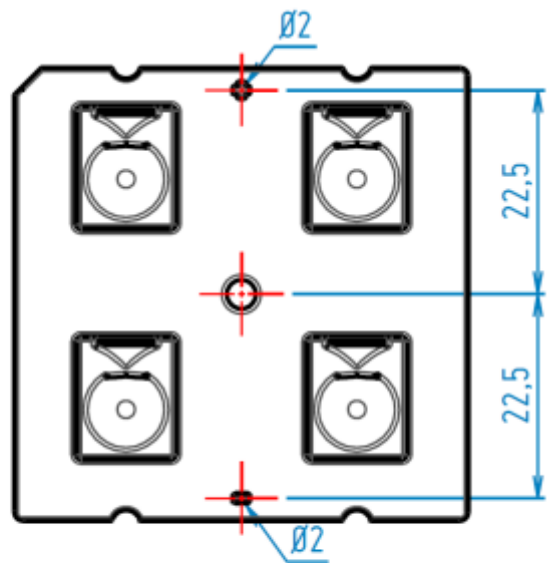
- LES size:** 5 mm x 5 mm max without dome / 2mm<sup>2</sup> with dome ; optimized for Lumileds 5050
- Type of LED:** High Power
- Materials:** PMMA (operating temperature: -40°C to +80°C), PC material available upon request.



# AVIKA: 2D drawing

All dimensions are in millimeters.

General tolerance +/- 0.1mm (standard NFT 58-000 cat. 4, reduced class).



# AVIKA 2X2 5050 T3S



**EN13201** : M1-M3 and P class design. Works very well in variety of different road setups including high poles and low pole settings. Ideal for poles with adjusted boom angle and roads with sidewalk

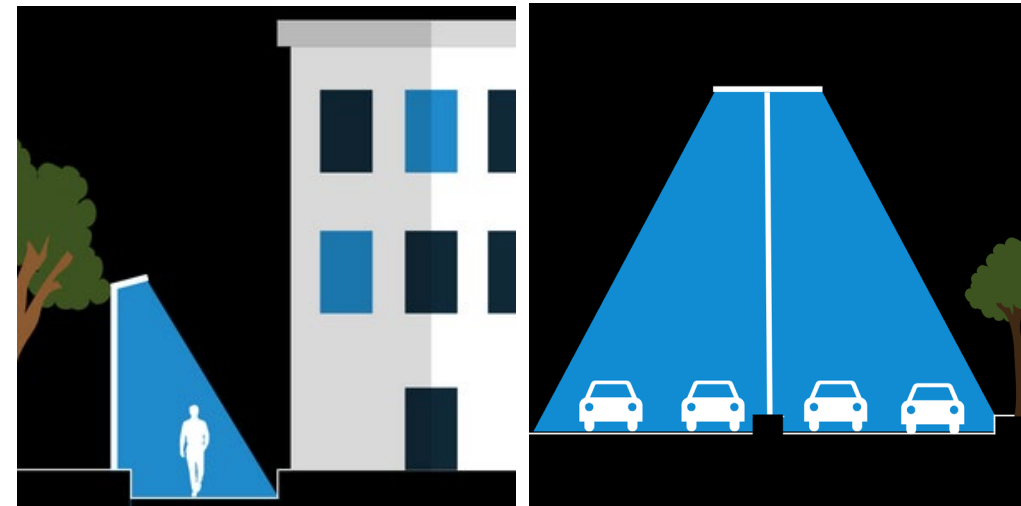
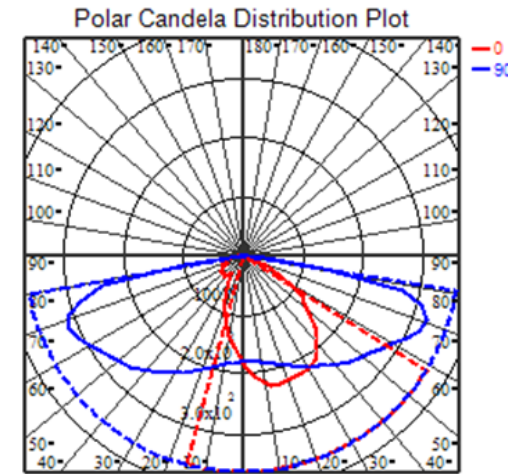
**Applications:** Highways, Residential and Bicycle roads.

**Where to use:** Road setups, where road width is the same or less than the pole height. **MH** to distance ratio in **M1-M3-class** roads, **up to 1:4**. **P-classes: up to 1:6**

**IESNA:** Type III Short (P and M class roads)

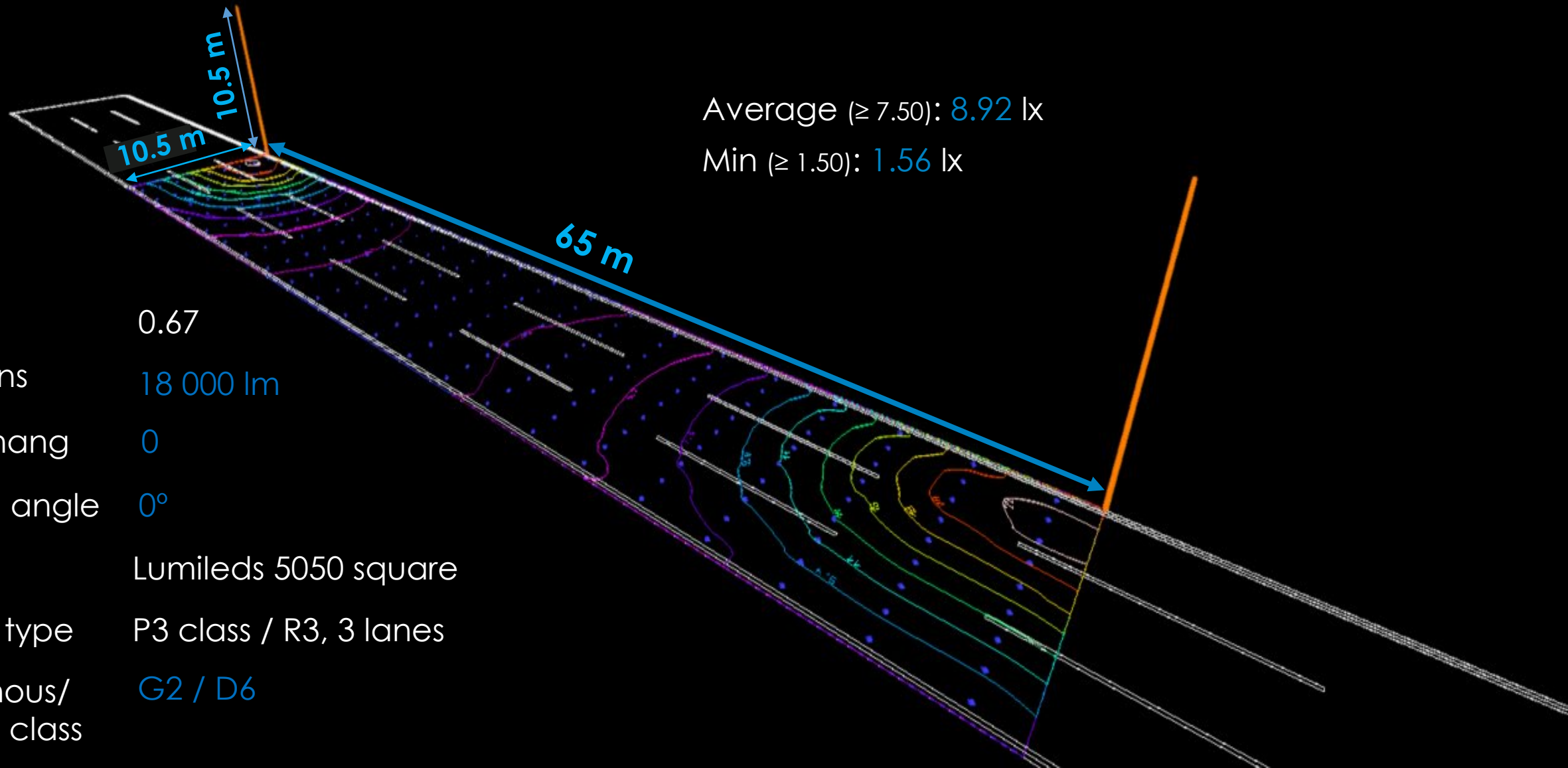
**Cutoff class:** Semi-cutoff

**Mask:** is optional backlight control accessory for areas where backlight is regulated, or when luminaire is installed next to building and excess light behind the pole needs to be eliminated



\*\* IESNA Type defined and simulated with protective glass

# AVIKA 2x2 5050 T3S

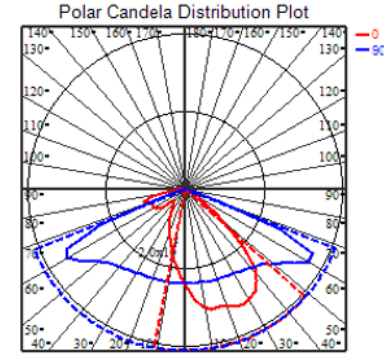


Average ( $\geq 7.50$ ): 8.92 lx

Min ( $\geq 1.50$ ): 1.56 lx

MF	0.67
Lumens	18 000 lm
Overhang	0
Boom angle	0°
LED	Lumileds 5050 square
Road type	P3 class / R3, 3 lanes
Luminous/ Glare class	G2 / D6

# AVIKA 2X2 5050 T2S



**EN13201** : M3 and P class design. Great for residential and pedestrian walking areas with low pole height setting. Ideal for short pole height installations (4,5,6) meters.

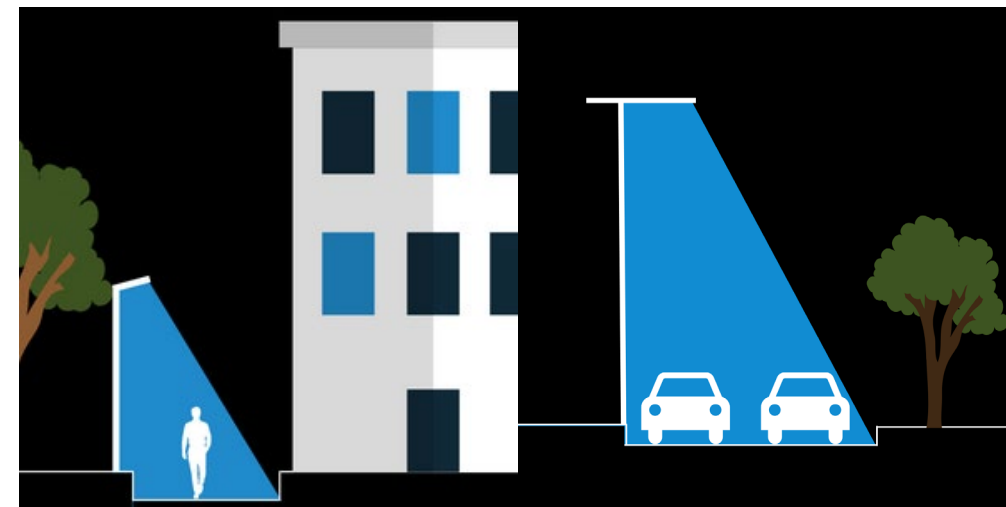
**Applications:** Highways, Residential and Bicycle roads.

**Where to use:** Roads where road width is the same or shorter than pole height. **MH to distance ratio 1: 3-4**

**IESNA:** Type II Short (P and M3 classified roads).

**Cutoff class:** Full Cutoff

**Mask:** is optional backlight control accessory for areas where backlight is regulated, or when luminaire is installed next to building and excess light behind the pole needs to be eliminated



\*\* IESNA Type defined and simulated with protective glass

# AVIKA: Mask Compatibilities

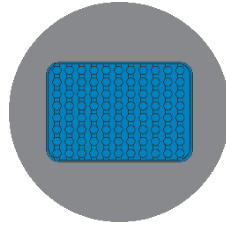
Optical component : AVIKA\* + Mask : AVIKA\*M

Optical component	Mask
AVIKA 2x2 5050 T3S	AVIKA 2x2 5050 T3S M
AVIKA 2x2 5050 T2S	AVIKA 2x2 5050 T2S M



# AVIKA: Packaging

## AVIKA\*\*



4 layers of 150 pieces  
individually packed



600 parts  
Box: 340x320x260mm  
Weight: 6 kg

# Code form standard range

## LENS

### OPTICAL

- 01: 16 mm
- 02: 16 mm
- 12: 16 mm
- 22: 16 mm RGBW
- 05: 32 mm
- 15: 32 mm
- 25: 32 mm RGBW
- 07: 35 mm
- 45: 45 mm UFO or VEGA
- 49: 45 mm RGBW
- 59: 45 mm RGBW gen 2
- 56: 67mm in PMMA
- 66: 67 mm in silicone
- 76: 67mm in silicone
- 67: 67 mm UFO

### PRODUCT

- LLC: Collimator
- LLH: Holder
- LLL: Linear collimator
- LLR: Reflector
- LLS: Set
- UFO: Ultra Flat Optic
- VEGA : 45mm COB oriented
- AVIKA : Street Lighting

### BEAM ANGLE

- U/R/RF/UF: Ultra Narrow
- N/NF: Narrow
- M: Medium
- W: Wide
- X: Extra large
- S: Super large
- L: Large
- V: Very large
- E: Elliptical
- Z: Zoom

### MATERIAL

- 0 or nothing : PMMA
- 1: PC
- 2: PC anti-UV
- 7: Silicone

LLS01W01ABC001

**ABC:** Holder type according to LED package

### COLORS & DECORS

- 0: Translucent
- 1: White
- 2: Black

### ADHESIVE OPTION

- 1: Yes
- Nothing: No

### VERSION

### TYPE

- 1: 16mm
- 2: 32mm
- 3: 3x16mm
- 4: 4x16mm
- 9: 45mm

## HOLDER

# Contact us

## GAGGIONE SAS Headquarter

3, Rue de la Rolland  
01460 Montréal la Cluse  
France  
+33 4 74 76 12 66

✉ [contact@gaggione.com](mailto:contact@gaggione.com)  
☎ [www.optic-gaggione.com](http://www.optic-gaggione.com)

## Sales Team in GAGGIONE

Sandrine Mancuso  
France, UK, Italy, Spain

✉ [s.mancuso@gaggione.com](mailto:s.mancuso@gaggione.com)  
☎ +33 787 87 84 72

Antoine Le Cordier  
France, Scandinavia,  
Eastern and Northern Europe

✉ [a.lecordier@gaggione.com](mailto:a.lecordier@gaggione.com)  
☎ +33 607 37 20 28

Nicolas Golfier  
France, Scandinavia,  
Eastern and Northern Europe

✉ [n.golfier@gaggione.com](mailto:n.golfier@gaggione.com)  
☎ +33 677 35 50 37

Laurent Barel  
Sales & Marketing Director

✉ [l.barel@gaggione.com](mailto:l.barel@gaggione.com)  
☎ +33 612 04 41 30

## International Sales Offices

GAGGIONE Americas  
Michael Pietro  
12833 Surrey Ct.  
Palos Park, IL  
60464

✉ [m.pietro@gaggione.com](mailto:m.pietro@gaggione.com)  
☎ +1 224 392 0087

GAGGIONE Asia  
Zhen Xu  
Unit 1808, No. 8, Kuaiji Road,  
Jintiandi International building,  
Huangpu District,  
Shanghai, 200021, China

✉ [z.xu@gaggione.com](mailto:z.xu@gaggione.com)  
☎ +86 136 5189 6981

GAGGIONE Canada  
Stephane Saindon  
744 36th Avenue  
Montreal, Quebec  
H8T3L2

✉ [s.saindon@gaggione.com](mailto:s.saindon@gaggione.com)  
☎ +1 514 928 2179

GAGGIONE DACH  
Angelika Aigner  
Kreuzstrasse 7  
83355 Grabenstätt  
Germany

✉ [a.aigner@gaggione.com](mailto:a.aigner@gaggione.com)  
☎ +49 8661 983 44 77

## Product Management & Business development

Joni MÄKI  
Artunkuja 7,  
24260 Salo  
FINLAND

✉ [j.maki@gaggione.com](mailto:j.maki@gaggione.com)  
+33 6 38 24 17 51