

STANDARD RANGE

280 x 40 mm PMMA collimator —
POLLUX7X1

February, 2025

POLLUX7X1: presentation

GAGGIONE's new diamond-turned glare-free family, POLLUX7X1 is here (280 mm x 40 mm).

Beautifully designed, high precision micro-structured optics provides excellent color consistency and homogenous light. Pollux7x1 optics are tunable white optimized and mixing colors without the need of using diffusing material.

2 colours: Black or White
2 finishes: Glossy or Matt

10 References:

2 Louvre heights
LVR (H = 15.8 mm)
LVR2 (H = 20.25 mm)



POLLUX7X1N

Narrow beam
~10-15°

POLLUX7X1G

Wall Grazer
~20-25°

POLLUX7X1M

Medium beam
~30°

POLLUX7X1W

Wide beam
~50-55°

POLLUX7X1L

Large beam
~63°

POLLUX7X1VL

Very Large beam
~80°

POLLUX7X1VLD

Very Large beam
diffused
~80°

POLLUX7X1E

Elliptical beam
~25° X ~80°

POLLUX7X1AS25

Asymmetric Shelf beam

POLLUX7X1DA35

Double Asymmetric beam

POLLUX7X1: LED specifications

LES size: 5.0 mm x 5.0 mm maximum.

Type of LED: Mid-power, Chip Scale Package.

Type of Led	POLLUX7X1N	POLLUX7X1G	POLLUX7X1M	POLLUX7X1W	POLLUX7X1L	POLLUX7X1VL	POLLUX7X1VLD	POLLUX7X1E	POLLUX7X1AS25	POLLUX7X1DA35
CSP 3535 HP	✓	✓	✓	✓	✓	✓	✓	✓	✓	✓
2835 x 1 3030 x 1 3535 x 1	✗	✓	✓	✓	✓	✓	✓	✓	✓	✗
2835 X 2 3030 X 2 5050 X 1	✗	✓	✓	✓	✓	✓	✓	✓	✓	✗
CSP X 4 2835 X 4 3030 X 4	✗	✗	✗	✓	✓	✓	✓	✗	✗	✗
Tunable white	✗	✗	✗	✓	✓	✓	✓	✗	✗	✗

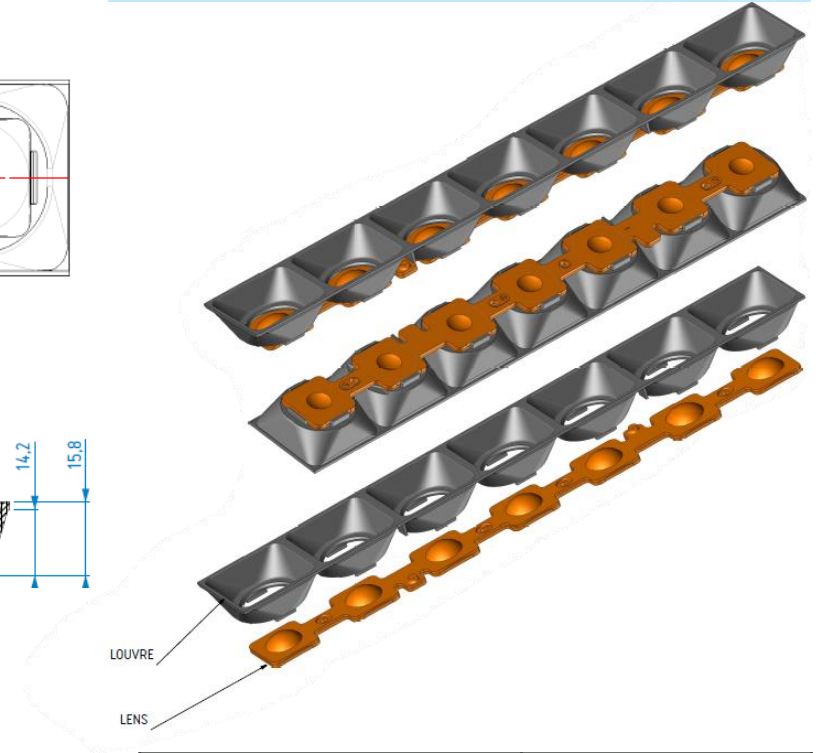
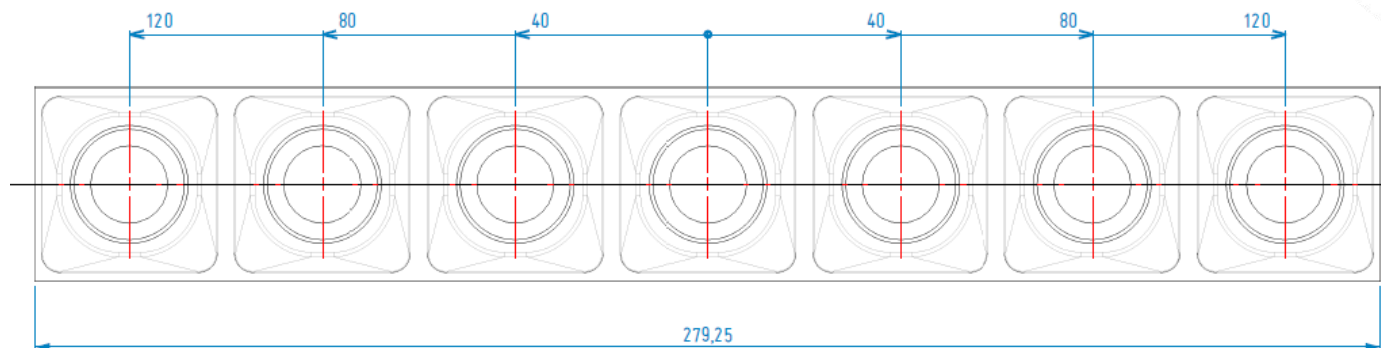
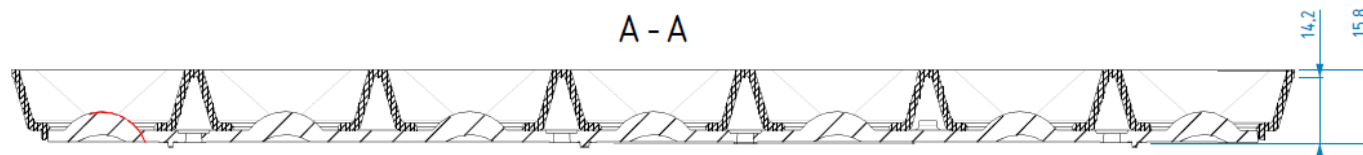
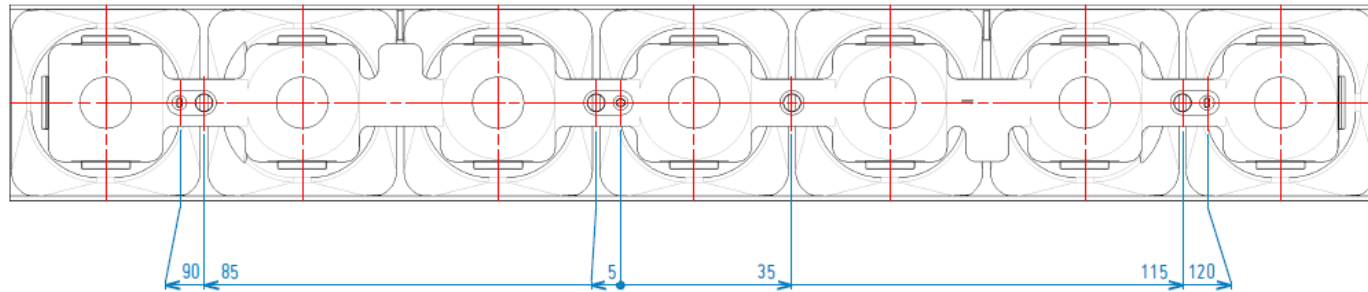
** Some photometries such as POLLUX7X1E, POLLUX7X1AS25 and POLLUX7X1DA35 can be used even with 3pcs of CSPs (linear installation), please kindly contact us (contact@gaggione.com) for more compatibility information

POLLUX7X1: applications



POLLUX7X1: 2D drawing

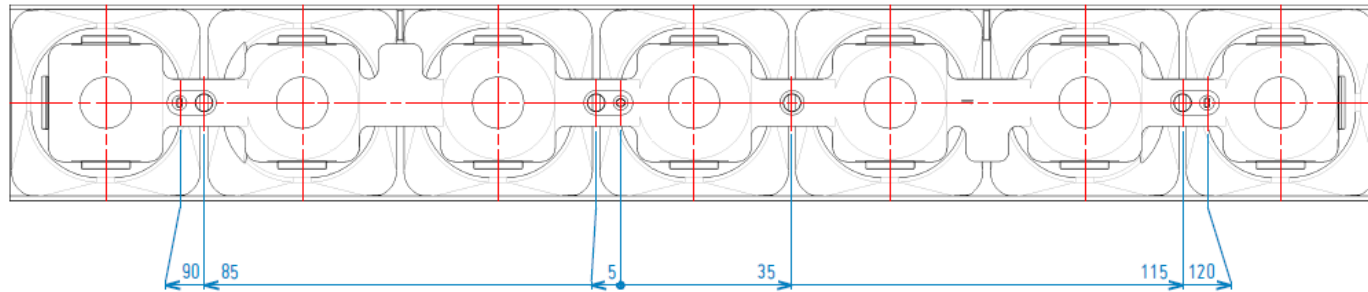
Louvre version 1 (low profile)



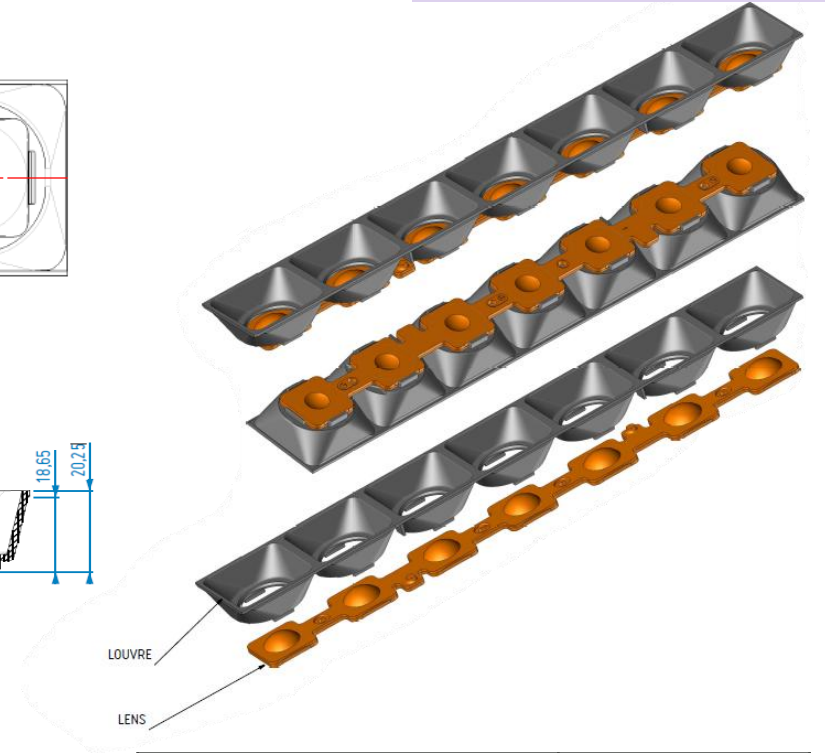
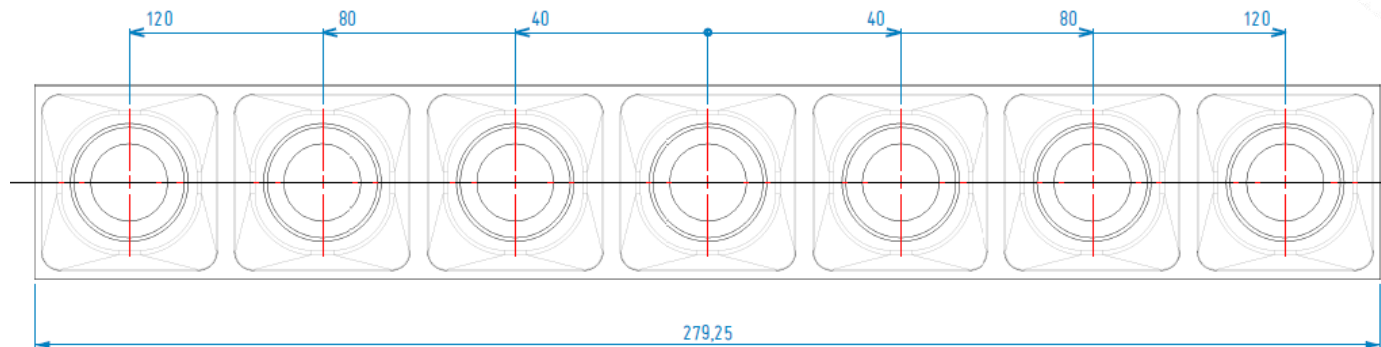
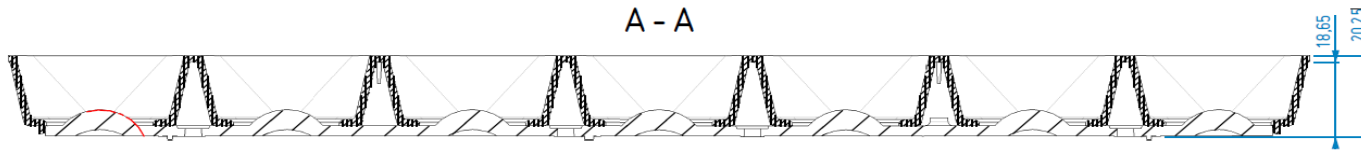
Louvre reference	Description
LVRPOLLUX7X101	White, glossy
LVRPOLLUX7X101M	White, matt
LVRPOLLUX7X102	Black, glossy
LVRPOLLUX7X102M	Black, matt

POLLUX7X1: 2D drawing

Louvre version 2



A - A



Louvre reference	Description
LVR2POLLUX7X101	White, glossy
LVR2POLLUX7X101M	White, matt
LVR2POLLUX7X102	Black, glossy
LVR2POLLUX7X102M	Black, matt

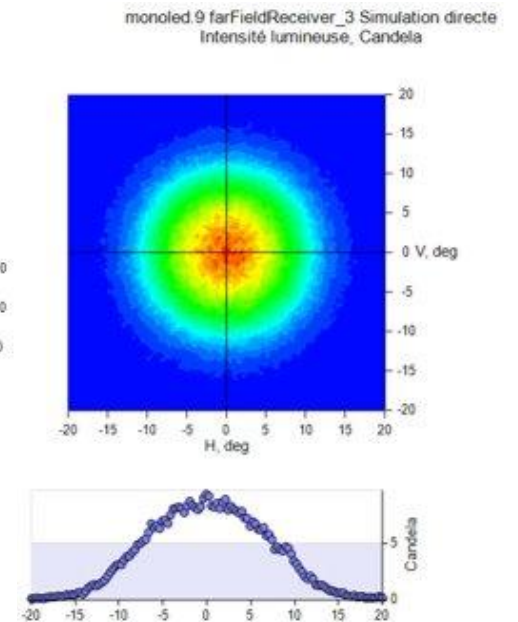
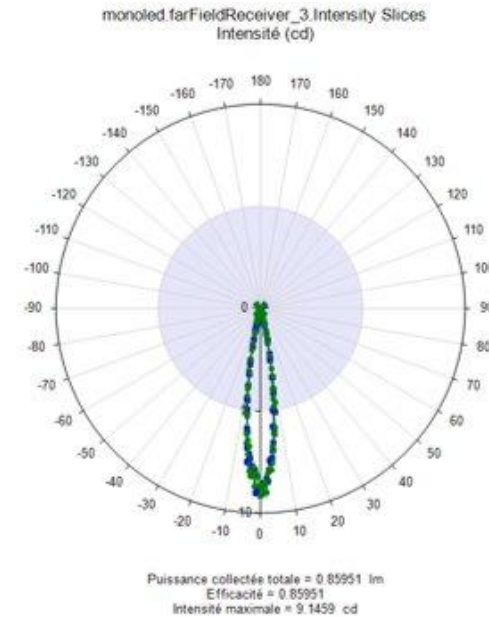
POLLUX7X1N: Narrow beam



Compatibility matrix

POLLUX7X1N	NICHIA	NICHIA
	E17 (1717)	E21
FWHM (°)	13.4	18.2
FTM (°)	23.8	28.7
Efficacy (cd/lm)	11.6	8

*** Note, these are based on simulated results, please [contact us](#) for measurements, simulations and compatibilities for the LED type you would like to use.*



Visit the [product page](#) on our website

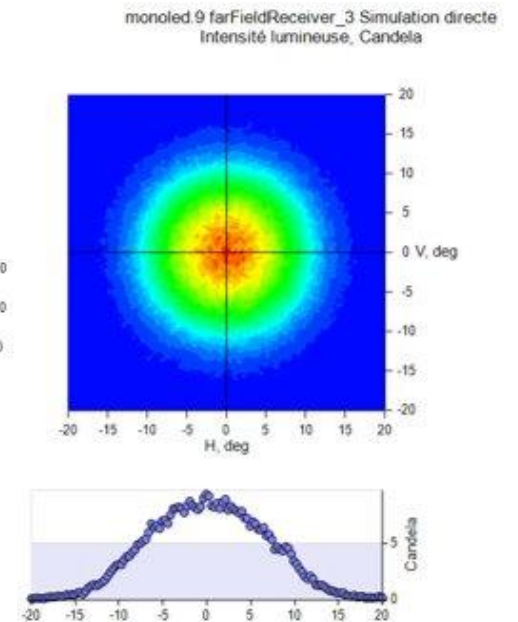
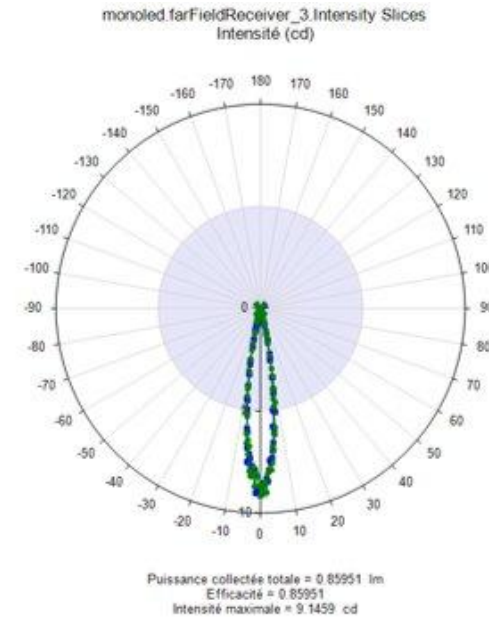
POLLUX7X1G: Wall Grazer



Compatibility matrix

POLLUX7X1N	NICHIA	NICHIA	NICHIA
	E17 (1717)	E21	757
FWHM (°)	20.3	22	23.2
FTM (°)	42.7	45.4	49.4
Efficacy (cd/lm)	3.6	3.4	3.2

*** Note, these are based on simulated results, please [contact us](#) for measurements, simulations and compatibilities for the LED type you would like to use.*



Intensity pattern

LED: Nichia E21

Visit the [product page](#) on our website

POLLUX7X1M: Medium beam

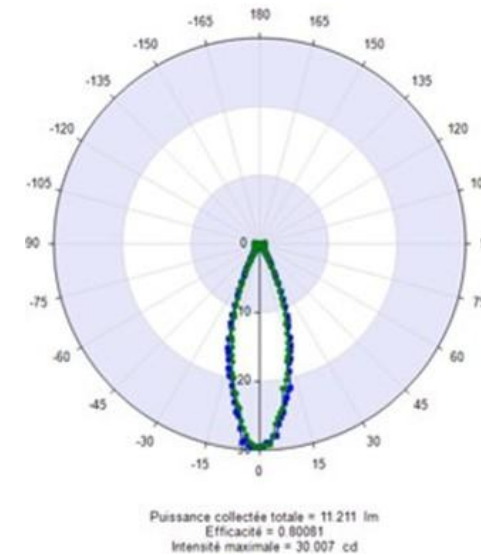


Compatibility matrix

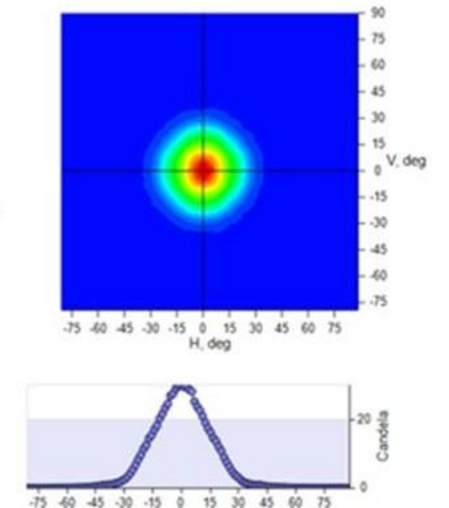
	Nichia	Samsung	Lumileds
POLLUX7X1M	2 x 757	2 x 3030	5050
FWHM (°)	32.1	34.1	27.1
FTWM (°)	56.2	58.2	49.9
Efficacy (cd/lm)	2.40	2.13	2.88

*** Note, these are based on simulated results, please [contact us](#) for measurements, simulations and compatibilities for the LED type you would like to use.*

lineaires40_2x3030 farFieldReceiver_155 Intensity Slices
Intensité (cd)



lineaires40_2x3030 23 farFieldReceiver_2 Simulation directe
Intensité lumineuse, Candela



Visit the [product page](#) on our website

POLLUX7X1W: Wide beam

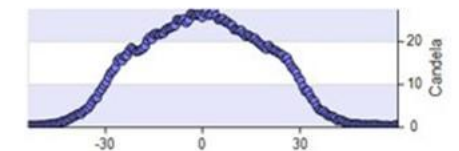
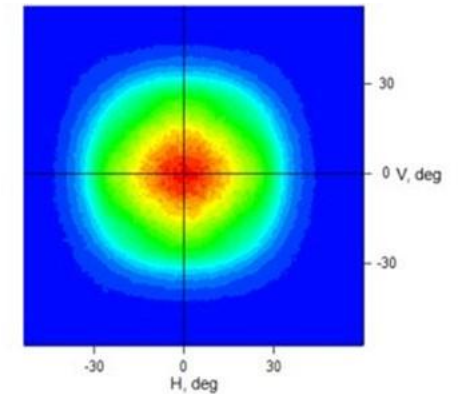
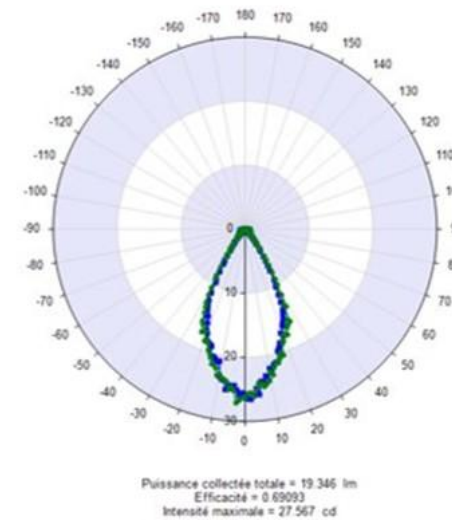


Compatibility matrix

	Nichia	Lumileds		
POLLUX7X1W	4x 757	4x 2835		
FWHM (°)	55	51		
FWTM (°)	78.2	74.2		
Efficacy (cd/lm)	1	1		

*** Note, these are based on simulated results, please [contact us](#) for measurements, simulations and compatibilities for the LED type you would like to use.*

lineaires40_TW_LES_realistes farFieldReceiver_155 Intensity Slices
Intensité (cd)



Intensity pattern
LED: Nichia 757 (4pcs)

[Visit the product page](#) on our website

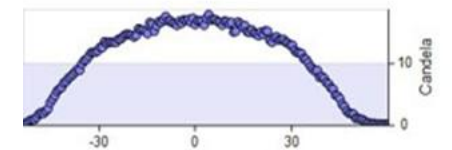
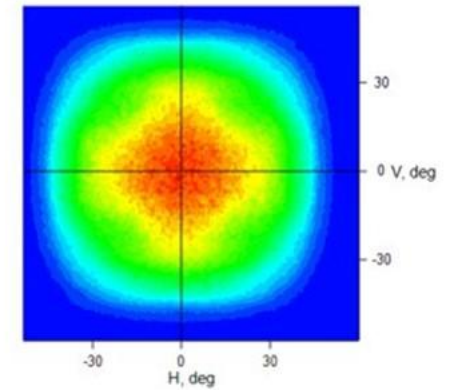
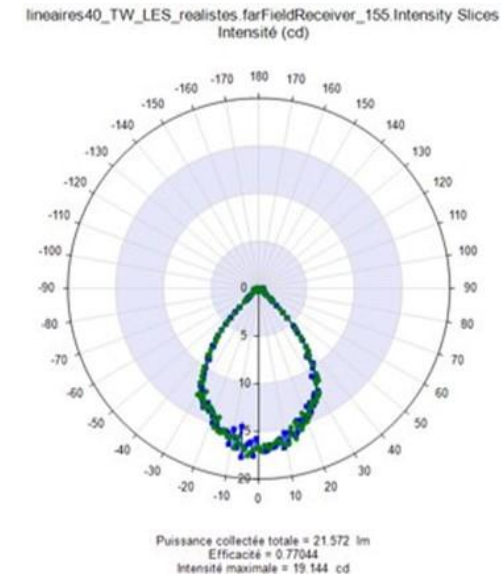
POLLUX7X1L: Large beam



Compatibility matrix

	Nichia	Lumileds		
POLLUX7X1L	4x 757	4x 2835		
FWHM (°)	75.3	73.2		
FWTM (°)	108	106.5		
Efficacy (cd/lm)	0.55	0.5		

*** Note, these are based on simulated results, please [contact us](#) for measurements, simulations and compatibilities for the LED type you would like to use.*



Intensity pattern
LED: Nichia 757 (4pcs)

[Visit the product page](#) on our website

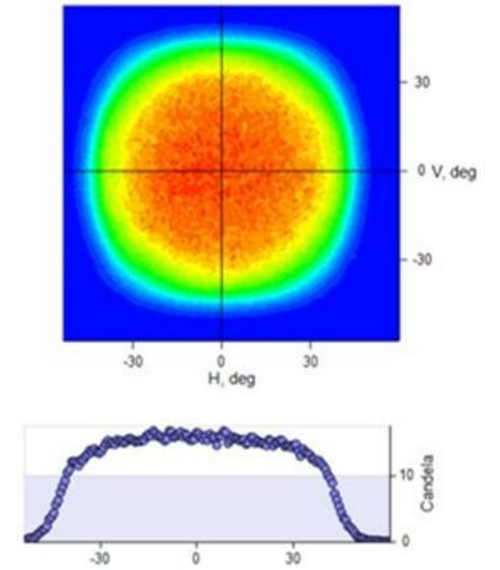
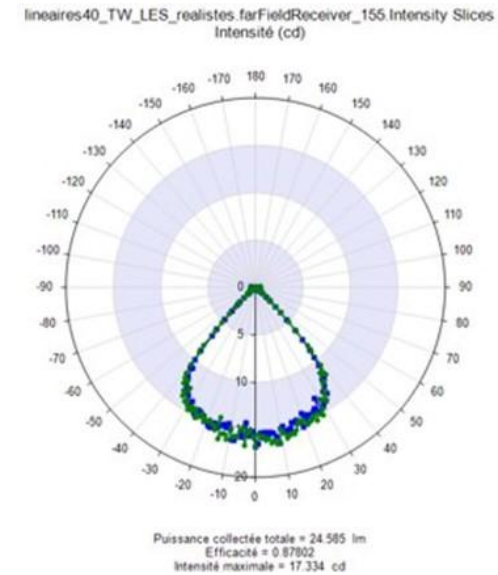
POLLUX7X1VL: Very Large beam



Compatibility matrix

	Nichia	Lumileds	Nichia	
POLLUX7X1VL	4x 757	4x 2835	2x 757	
FWHM (°)	85	83.8		
FTM (°)	99	96.4		
Efficacy (cd/lm)	0.60	0.55		

*** Note, these are based on simulated results, please [contact us](#) for measurements, simulations and compatibilities for the LED type you would like to use.*



Intensity pattern

LED: Nichia 757 (4pcs)

UGR ≤ 19 @ 1000 lumens

[Visit the product page](#) on our website

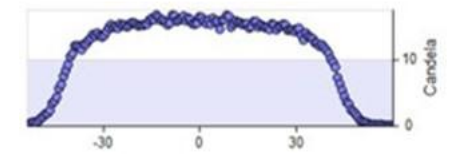
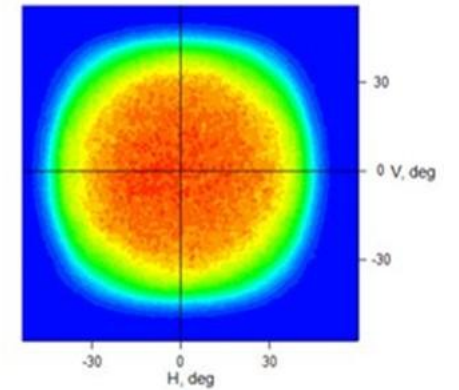
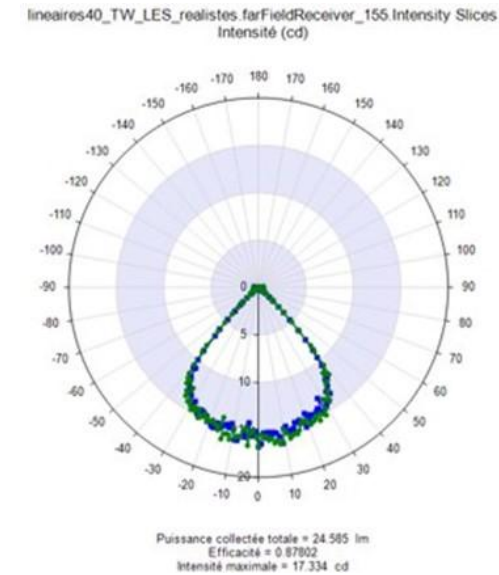
POLLUX7X1VLD: Very Large beam Diffused



Compatibility matrix

	Nichia	Lumileds	Nichia	
POLLUX7X1VLD	4x 757	4x 2835	2x 757	
FWHM (°)	83,0	82,7	83,0	
FTWM (°)	114,1	114,8	113,4	
Efficacy (cd/lm)	0,5	0,5	0,5	

*** Note, these are based on simulated results, please [contact us](#) for measurements, simulations and compatibilities for the LED type you would like to use.*



*** Please note that this photometry is based on POLLUX7X1VL, that has similar photometry.
Please see our .IES file for exact photometry comparison ***

Intensity pattern

LED: Nichia 757 (4pcs)

UGR \leq 19 @ 1000 lumens

[Visit the product page](#) on our website

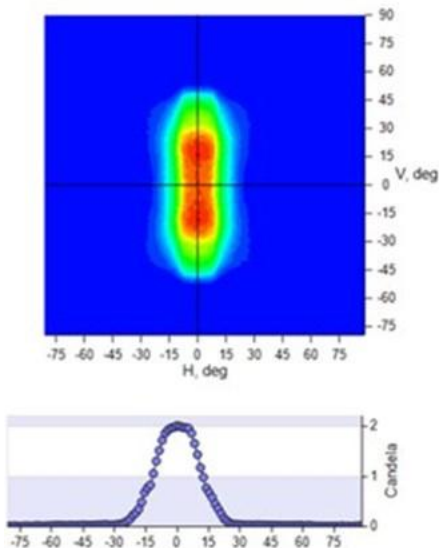
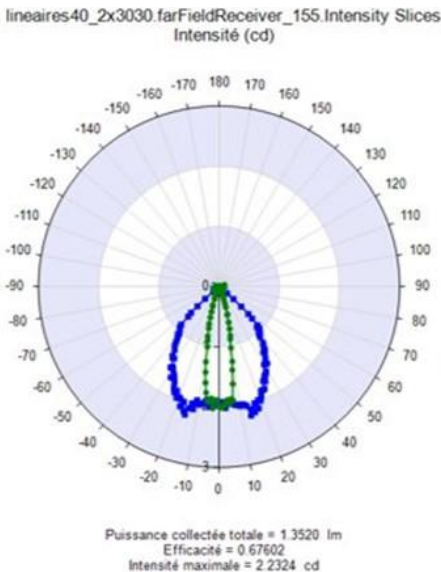
POLLUX7X1E: Elliptical beam



Compatibility matrix

	NICHIA	SAMSUNG	Nichia	
POLLUX7X1E	2x E21	2x 3030	2x E11	
FWHM (°)	18 x 87	22 x 84		
FTM (°)	35 x 97	43 x 101		
Efficacy (cd/lm)	1.26	1.14		

*** Note, these are based on simulated results, please [contact us](#) for measurements, simulations and compatibilities for the LED type you would like to use.*



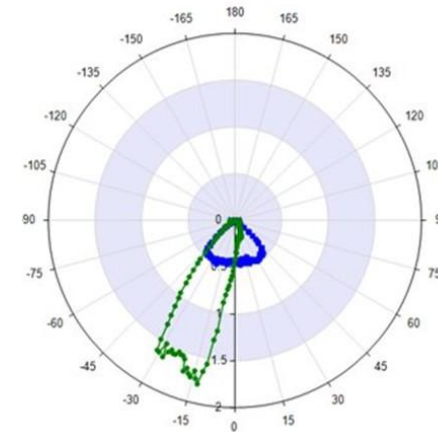
Intensity pattern
LED: 3030 (2pcs)

Visit the product page on our website

POLLUX7X1AS25: Asymmetric beam

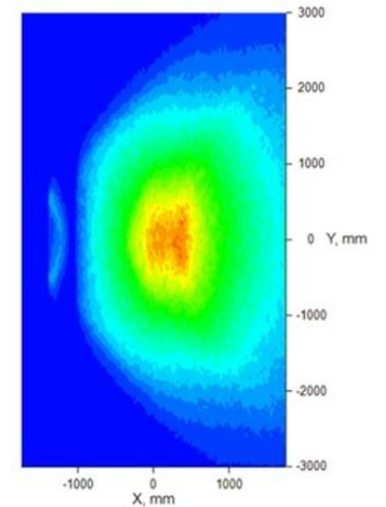


lineaires40_2x3030 farFieldReceiver_155 Intensity Slices
Intensité (cd)



Puissance collectée totale = 1.3833 lm
Efficacité = 0.69163
Intensité maximale = 1.8088 cd

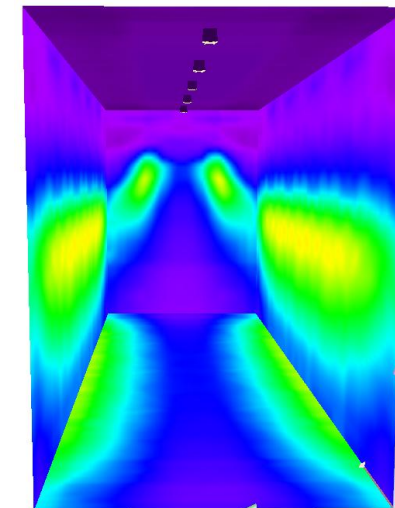
lineaires40_2x3030 25 Receiver_367 Simulation directe
Eclairciment, Lux



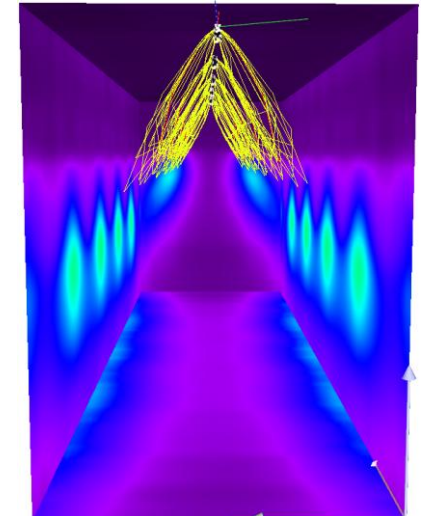
Compatibility matrix

	NICHIA	Nichia	SAMSUNG	NICHIA
POLLUX7X1AS25	2x E21	2x E11	2X LM301B+	2x 757
FWHM (°)	Asym.	Asym.	Asym.	
FWTM (°)				
Efficacy (cd/lm)				

*** Note, these are based on simulated results, please [contact us](#) for measurements, simulations and compatibilities for the LED type you would like to use.*



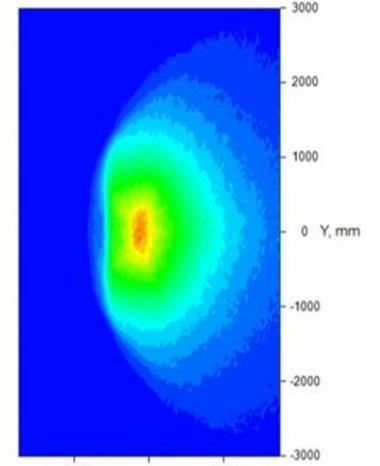
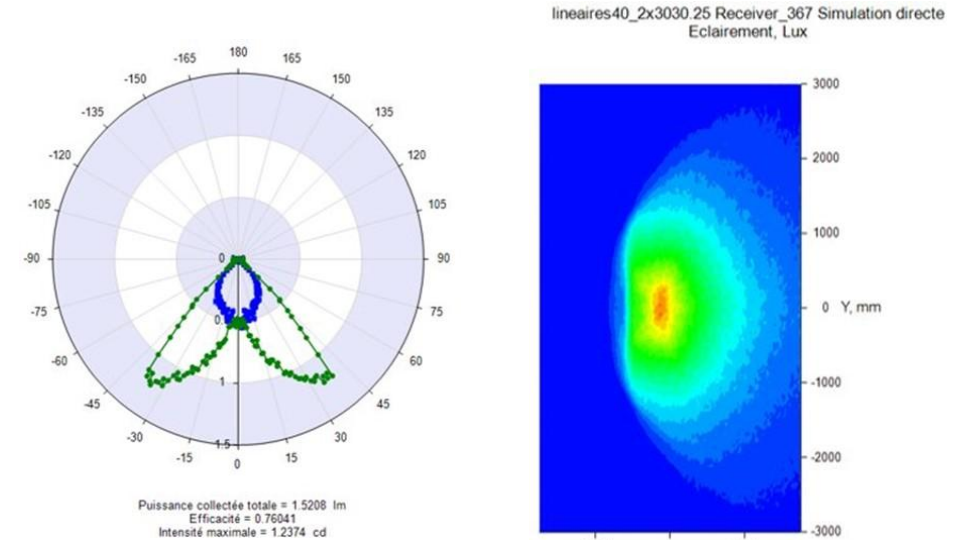
POLLUX7X1AS25



Competition

[Visit the product page](#) on our website

POLLUX7X1DA35: Double Asymmetric beam



Compatibility matrix

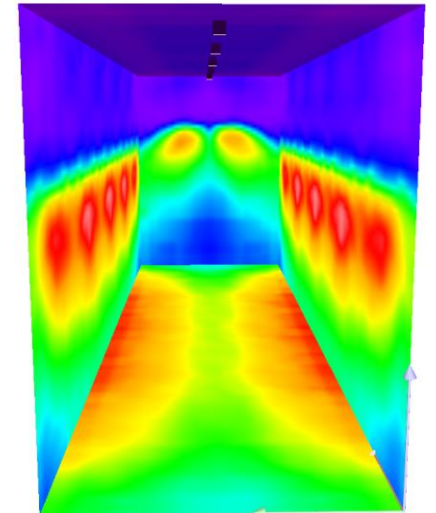
	NICHIA	NICHIA	NICHIA
POLLUX7X1E	2x E21	2x E11	2x 757
FWHM (°)	Asym.		
FWTM (°)			
Efficacy (cd/lm)			

*** Note, these are based on simulated results, please [contact us](#) for measurements, simulations and compatibilities for the LED type you would like to use.*

Dialux simulation

LED: 2x Nichia E21

Room width 2.6m
Room height 3.5m
Distance between luminaires 2m
Light starts 1m away
Tilt: 0



[Visit the product page](#) on our website

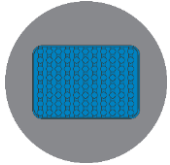
POLLUX7X1: Kit codes (lens + louvre)

Louvre 1 (low profile)	Narrow POLLUX7X1N	Medium POLLUX7X1M	Wide POLLUX7X1W	Large POLLUX7X1L	Very Large POLLUX7X1VL	Very Large Diffused POLLUX7X1VLD	Elliptical POLLUX7X1E	Asymmetric POLLUX7X1AS25	Double Asymmetric POLLUX7X1DA3 5
White, glossy	KPOLLUX7X1N101	KPOLLUX7X1M101	KPOLLUX7X1W101	KPOLLUX7X1L101	KPOLLUX7X1VL101	KPOLLUX7X1VLD101	KPOLLUX7X1E101	KPOLLUX7X1AS25101	KPOLLUX7X1DA35101
White, matt	KPOLLUX7X1N101 M	KPOLLUX7X1M101M	KPOLLUX7X1W101M	KPOLLUX7X1L101M	KPOLLUX7X1VL101M	KPOLLUX7X1VLD101M	KPOLLUX7X1E101M	KPOLLUX7X1AS25101M	KPOLLUX7X1DA35101 M
Black, glossy	KPOLLUX7X1N102	KPOLLUX7X1M102	KPOLLUX7X1W102	KPOLLUX7X1L102	KPOLLUX7X1VL102	KPOLLUX7X1VLD102	KPOLLUX7X1E102	KPOLLUX7X1AS25102	KPOLLUX7X1DA35102
Black, matt	KPOLLUX7X1N102 M	KPOLLUX7X1R102M	KPOLLUX7X1W102M	KPOLLUX7X1L102M	KPOLLUX7X1VL102M	KPOLLUX7X1VLD102M	KPOLLUX7X1E102M	KPOLLUX7X1AS25102M	KPOLLUX7X1DA35102 M

Louvre 2 (H = 20.5 mm)	Narrow POLLUX7X1N	Medium POLLUX7X1M	Wide POLLUX7X1W	Large POLLUX7X1L	Very Large POLLUX7X1VL	Very Large POLLUX7X1VLD	Elliptical POLLUX7X1E	Asymmetric POLLUX7X1AS25	Double Asymmetric POLLUX7X1DA3 5
White, glossy	K2POLLUX7X1N101	K2POLLUX7X1M101	K2POLLUX7X1W101	K2POLLUX7X1L101	K2POLLUX7X1VL101	K2POLLUX7X1VLD101	K2POLLUX7X1E101	K2POLLUX7X1AS25101	K2POLLUX7X1DA35101
White, matt	K2POLLUX7X1N101 M	K2POLLUX7X1M101M	K2POLLUX7X1W101M	K2POLLUX7X1L101M	K2POLLUX7X1VL101M	K2POLLUX7X1VLD101 M	K2POLLUX7X1E101 M	K2POLLUX7X1AS25101 M	K2POLLUX7X1DA35101 M
Black, glossy	K2POLLUX7X1N102	K2POLLUX7X1M102	K2POLLUX7X1W102	K2POLLUX7X1L102	K2POLLUX7X1VL102	K2POLLUX7X1VLD102	K2POLLUX7X1E102	K2POLLUX7X1AS25102	K2POLLUX7X1DA35102
Black, matt	K2POLLUX7X1N102 M	K2POLLUX7X1R102M	K2POLLUX7X1W102M	K2POLLUX7X1L102M	K2POLLUX7X1VL102M	K2POLLUX7X1VLD102 M	K2POLLUX7X1E102 M	K2POLLUX7X1AS25102 M	K2POLLUX7X1DA35102 M

POLLUX7X1: Packaging

POLLUX7X1

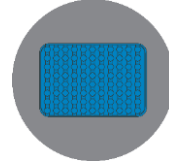


17 thermoformed trays with 12 parts each



204 parts
Box: 285 x 195 x 50 mm
Weight: 1.0 kg

LVRPOLLUX7X1



Bulk packing, packed in plastic bags matching POLLUX7X1 lens quantity



204 parts
Box: 285 x 195 x 150 mm
Weight: 1.0 kg

Code form standard range

LENS

OPTICAL

01: 16 mm
02: 16 mm
12: 16 mm
22: 16 mm RGBW
05: 32 mm
15: 32 mm
25: 32 mm RGBW
07: 35 mm
45: 45 mm UFO or VEGA
49: 45 mm RGBW
59: 45 mm RGBW gen 2
56: 67mm in PMMA
66: 67 mm in silicone
76: 67mm in silicone
67: 67 mm UFO

PRODUCT

LLC: Collimator
LLH: Holder
LLL: Linear collimator
LLR: Reflector
LLS: Set
UFO: Ultra Flat Optic
VEGA : 45mm COB oriented
HADAR70: 70mm COB oriented
POLLUX7X1: Linear low UGR solution
AVIKA : Street Lighting

BEAM ANGLE

U/R/RF/UF: Ultra Narrow
N/NF: Narrow
M: Medium
W: Wide
X: Extra large
S: Super large
L: Large
V: Very large
E: Elliptical
Z: Zoom

MATERIAL

0 or nothing : PMMA
1: PC
2: PC anti-UV
7: Silicone

LLS01W01ABC001

ABC: Holder type according to LED package

COLORS & DECORS

0: Translucent
1: White
2: Black

ADHESIVE OPTION

1: Yes
Nothing: No

VERSION

TYPE

1: 16mm
2: 32mm
3: 3x16mm
4: 4x16mm
9: 45mm

HOLDER

Contact us

GAGGIONE SAS Headquarter

3, Rue de la Rolland
01460 Montréal la Cluse
France

☎ +33 4 74 76 12 66

@ contact@gaggione.com

🌐 www.optic-gaggione.com

Sales Team in GAGGIONE

Laurent Barel
Sales & Marketing Director

@ l.barel@gaggione.com

☎ +33 612 04 41 30

Nicolas Golfier
France, Scandinavia,
Eastern and Northern Europe

@ n.golfier@gaggione.com

☎ +33 677 35 50 37

Sonia Andres
France, Italy, Spain,

@ s.andres@gaggione.com

☎ +33 607 37 20 28

Thibaud Bourgeat
UK

@ t.bourgeat@gaggione.com

☎ +33 688 03 59 51

International Sales Offices

GAGGIONE Americas
Michael Pietro
12833 Surrey Ct.
Palos Park, IL
60464

@ m.pietro@gaggione.com

☎ +1 224 392 0087

GAGGIONE Canada & USA
Stephane Saindon
744 36th Avenue
Montreal, Quebec
H8T3L2

@ s.saindon@gaggione.com

☎ +1 514 928 2179

GAGGIONE Canada & USA
Nicolas Pourrain
744 36th Avenue
Montreal, Quebec
H8T3L2

@ n.pourrain@gaggione.com

☎ +1 438 989 5133

GAGGIONE DACH
Angelika Aigner
Kreuzstrasse 7
83355 Grabenstätt
Germany

@ a.aigner@gaggione.com

☎ +49 8661 983 44 77

GAGGIONE Asia
Zhen Xu
Unit 1808, No. 8, Kuaiji Road,
Jintiandi International building,
Huangpu District,
Shanghai, 200021, China

@ z.xu@gaggione.com

☎ +86 136 5189 6981

Product Management & Business development

Joni MÄKI
Artunkuja 7,
24260 Salo
FINLAND

@ j.maki@gaggione.com

☎ +33 6 38 24 17 51