

STANDARD RANGE

50 mm PMMA collimator — HADAR50

February, 2026

HADAR50: Main TIR lenses

Since the success of GAGGIONE's LLC79 premium silicone collimator family, we have developed 50mm PMMA collimator range with variety of twist and lock beam changing window accessories. HADAR50 is supporting even larger COBs and have better 3rd party connector support.

8 TIR designs



HADAR50N

Narrow beam
~10°



HADAR50C

Color beam



HADAR50M

Medium beam
~25°



HADAR50W

Wide beam
~30°



HADAR50L

Large beam
~40°



HADAR50V

Very large beam
~50°



HADAR50Z

Zoom beam
~10° - ~45°



HADAR50A

Wall washer beam

Holder versions:

HADAR50H10* - Bender+Wirth & existing LLH66B bases

HADAR50H40* - Bender+Wirth & BJB Φ 35mm compatible

HADAR50H90* - Hekla compatible

Holder colors: * 0 is clear, 1 is white, 2 is black

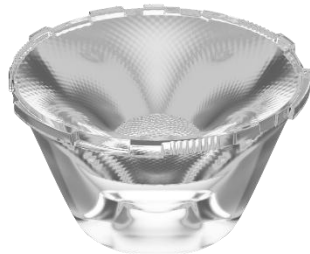
Specific holders for HADAR50A : HADAR50HA10*,
HADAR50HA40*, HADAR50HA90*.



HADAR50: Window accessories

HADAR50 window options provides ultimate flexibility. Easily mount our twist and lock window accessory on top of any HADAR50 series TIR lens to achieve the exact beam angle you want. HADAR50 window accessories are the best compromise between performance and price (LOR with main lens included +88%).

8 Windows options with easy twist and lock installation on HADAR50N



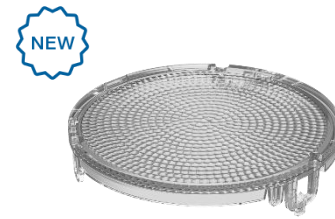
HADAR50N

Narrow beam
~10°



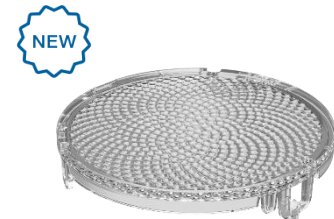
HADAR50WF

~12° Frosted
Narrow beam



HADAR50WM

~25° Medium beam



HADAR50WW

~30° Wide beam



HADAR50WL

~40° Large beam



HADAR50WV

~52° Very large beam



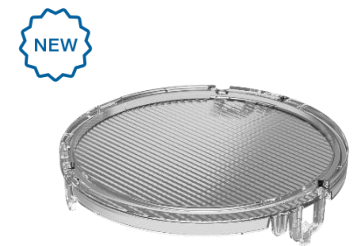
HADAR50WS

~52° Super wide beam



HADAR50WEN

Elliptical Narrow

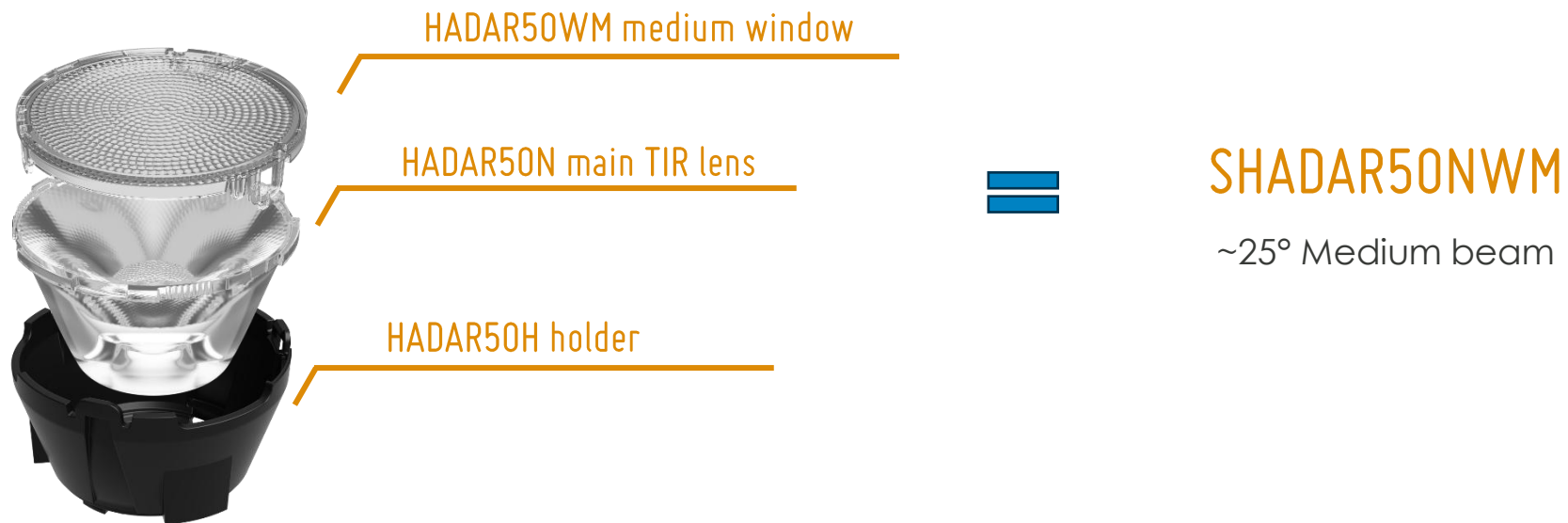


HADAR50WEW

Elliptical Wide

HADAR50: Window accessories

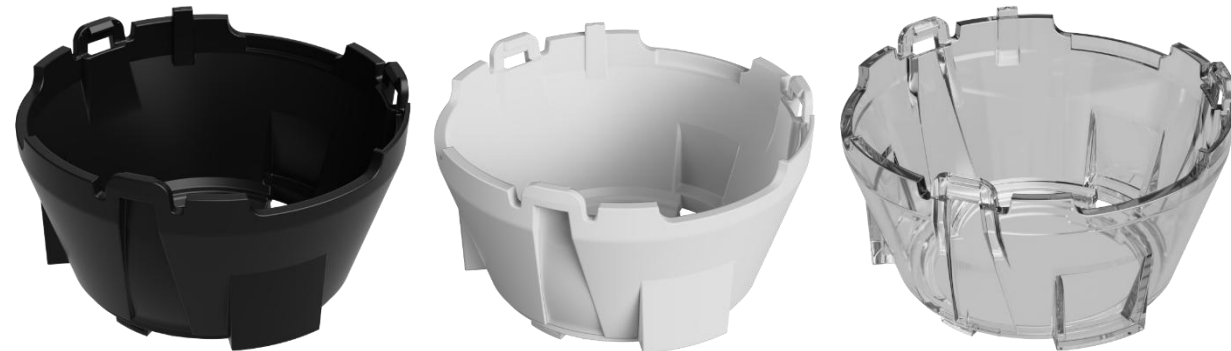
HADAR50 window accessories are specifically designed for manufacturers and architects desiring more flexibility. Window twist and locks to main HADAR50 TIR lens (such as HADAR50N).



Holder versions:

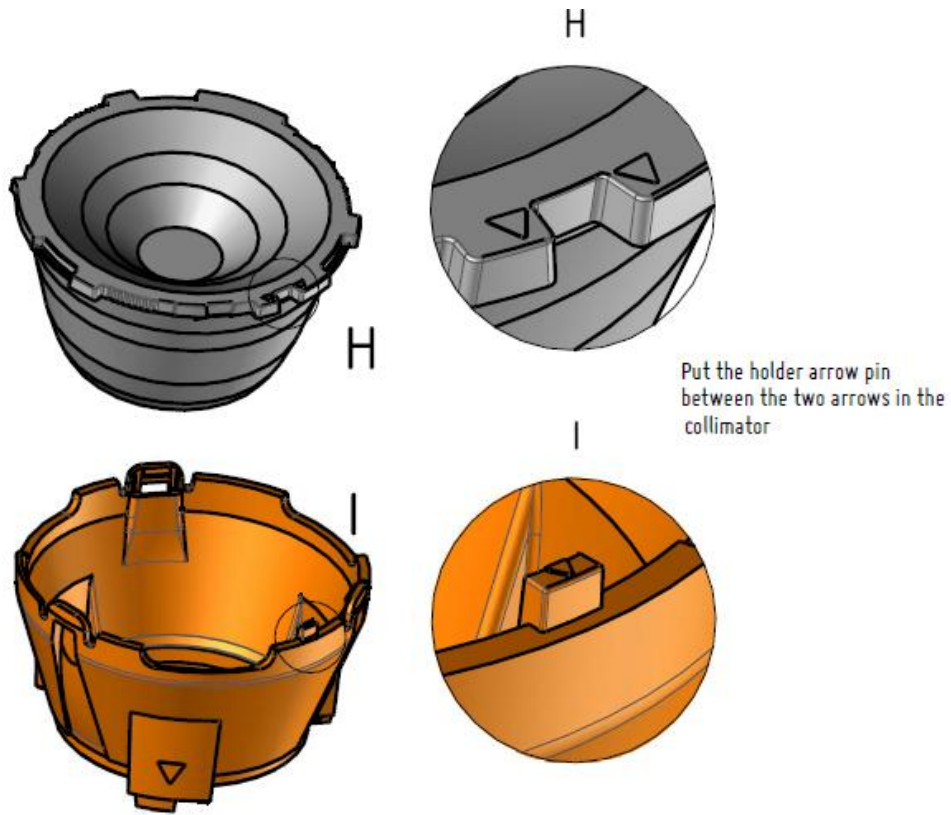
- HADAR50H10* - Bender+Wirth & existing LLH66B bases
- HADAR50H40* - Bender+Wirth & BJB Φ 35mm compatible
- HADAR50H90* - Hekla compatible

Holder colors: * 0 is clear, 1 is white, 2 is black

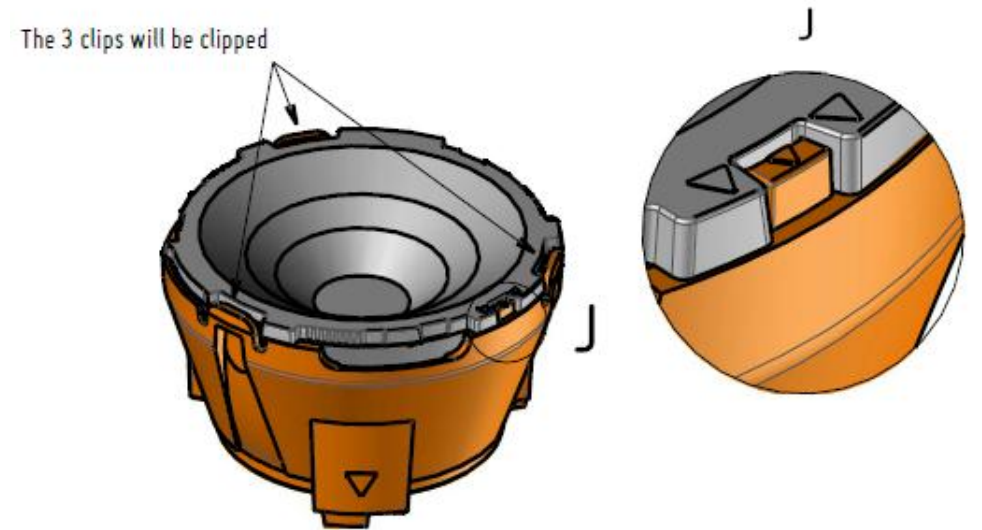


HADAR50: Assembly indications

1.



2.



HADAR50: Assembly indications

1.



Align pin under the arrow in the window with the hole in the arrow area in the collimator

2.



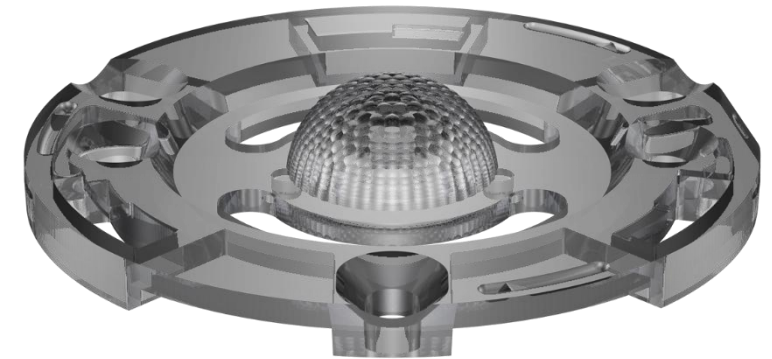
3.



Turn the window clockwise until you hear clic.
For the zoom version, you can adapt the window position related to the beam needed

HADAR50: Galaxy accessories

Having a color mixing capable zoom solution is a challenge when no compromise can be done on color consistency. **GALAXY*** product range has been designed to be integrated with our innovative **HADAR50Z*** zoom as a primary optic/base.



GALAXY 1

For integrated RGBW high power LEDs

GALAXY 2

For custom clusters of high power / CSP LEDs

[Get more info on the GALAXY range](#)

HADAR50: applications



LES compatibility: HADAR50 vs LLC79

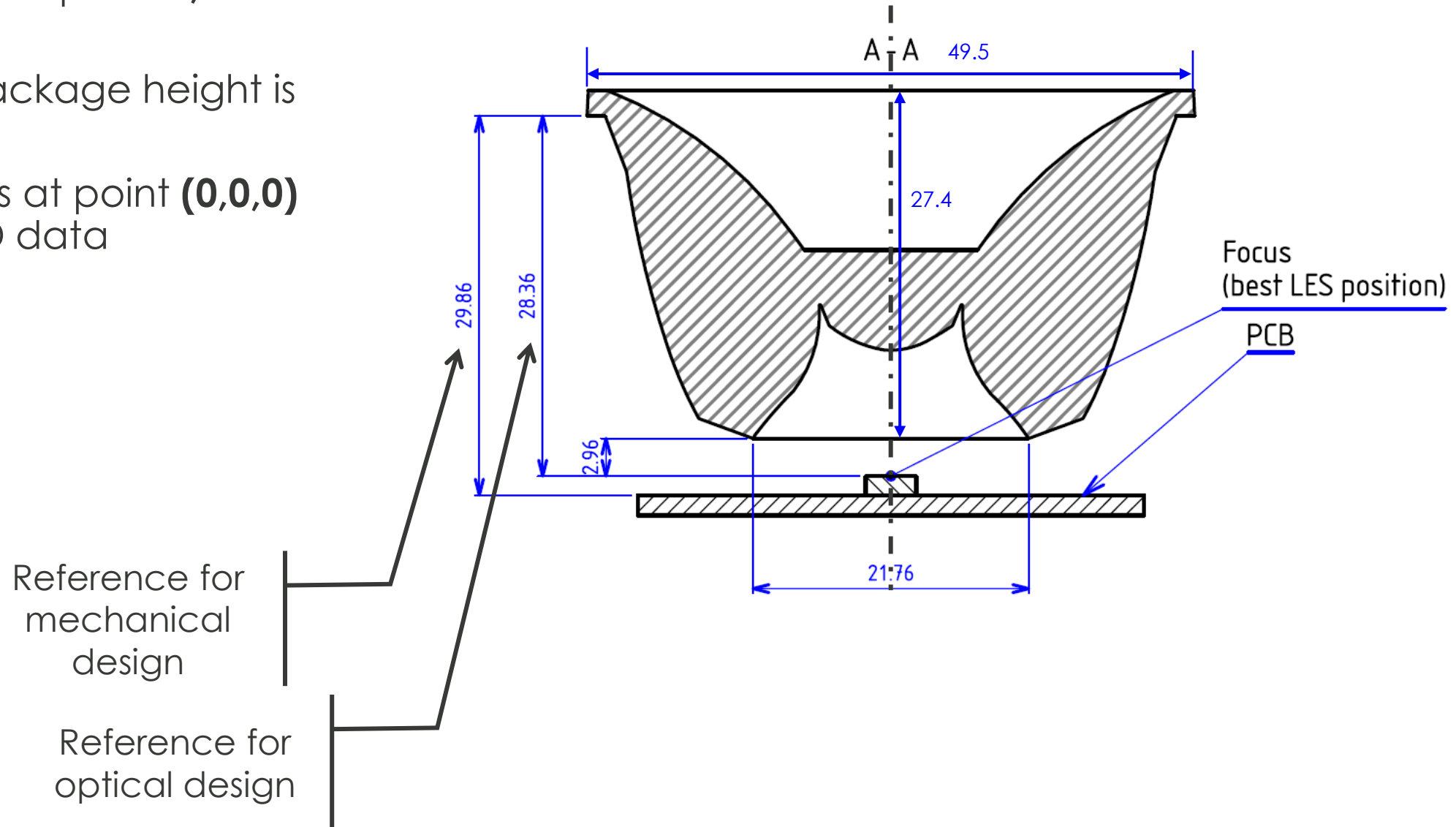
LES size: From 3 mm to up to 16 mm.

Type of LED: COBs, Cluster high Power LEDs, CSP clusters

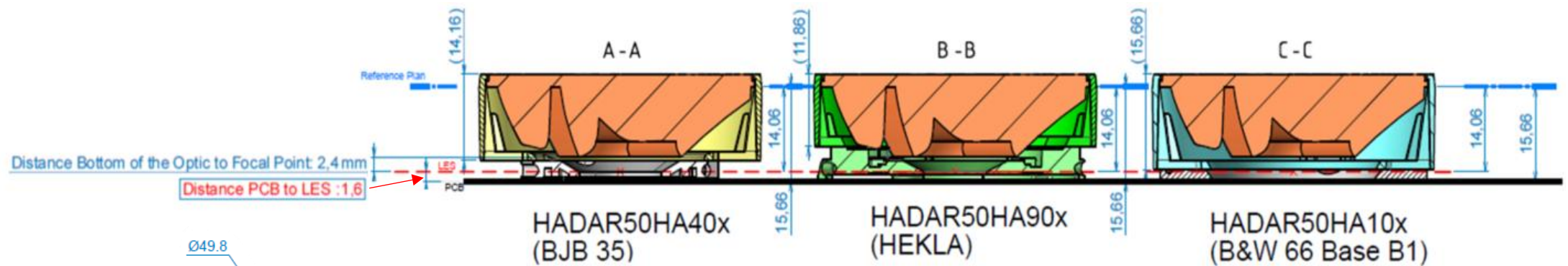
LED Compatibility	LLC79N7	LLC79M7	LLC79C7	LLC79W7	LLC79V7	LLC79Z7	HADAR
LES 3 – 9 mm	✓	✓	✓	✓	✓	✓	✓
LES 9 – 13 mm	✗	✗	✗	✗	✗	✗	✓
LES 13 – 16 mm	✗	✗	✗	✗	✗	✗	✓
Tunable white	✓	✓	✓	✓	✓	✗	✓
Dim to warm	✓	✓	✓	✓	✓	✗	✓

HADAR50: 2D Drawing

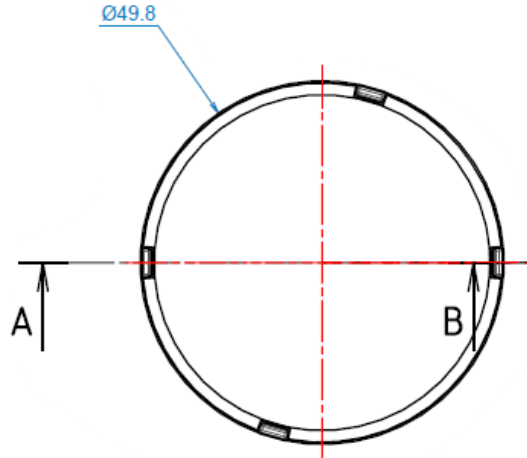
- LEDs to be used : COBs from **2,4mm** up to **16,2mm** LES
- The LED package height is **1.5mm**
- The focus is at point **(0,0,0)** in the CAD data



HADAR50A: 2D Drawing



HADAR50HAXXX is the dedicated holder for HADAR50A



Product name	Description	Total Height (lens+holder)	Height with connector
SHADAR50A90x	SET HADAR50A HEKLA	11.66 mm	17.16 mm
SHADAR50A40x	SET HADAR50A BJB35	14.16 mm	17.66 mm
SHADAR50A10x	SET HADAR50A LLH66	14.06 mm	16.06 mm
SHADAR50A10x	SET HADAR50A B+W B50G	14.06 mm	18.46 mm

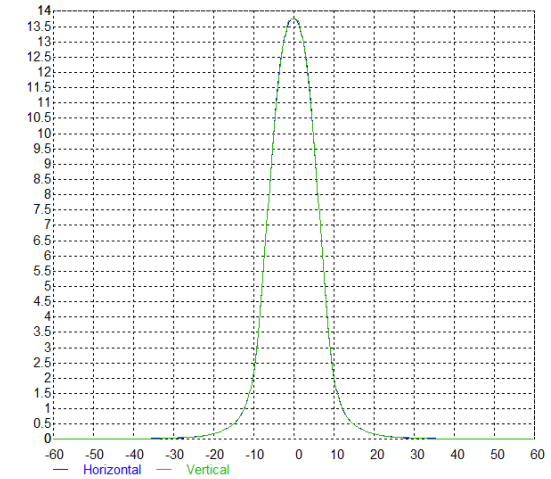
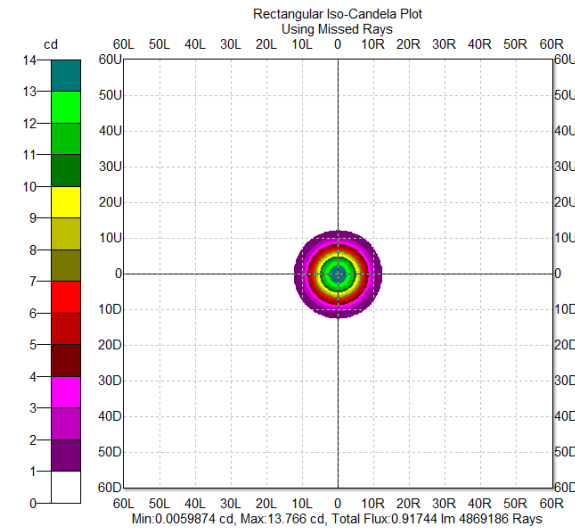
Sets are a combination of the holder and the optic. They are already assembled together.

HADAR50N: Narrow beam



Compatibility matrix

HADAR50N	LES 2,4 mm	LES 3,5 mm	LES 4,2 mm	LES 6 mm	LES 8,5 mm	LES 11 mm	LES 14,5 mm
FWHM (°)	6,3	8,7	9,6	13,8	18,4	21,4	36,2
FWTM (°)	11,4	14,4	17	22,2	30	37,6	44,2
Efficacy (cd/lm)	49,1	30	22,5	12,2	7,1	4,7	3,2
LOR	89,7 %	92,5%	90,1 %	87,7%	91,4%	88,6%	86,8%



Intensity pattern

LED: Citizen CLU703 (6mm)

Holder versions:

HADAR50H10* - Bender+Wirth and existing LLH66B bases

HADAR50H40* - Bender+Wirth & BJB Φ35mm compatible

HADAR50H90* - Hekla compatible

Holder colors: * 0 is clear, 1 is white, 2 is black

[Visit the product page on our website](#)

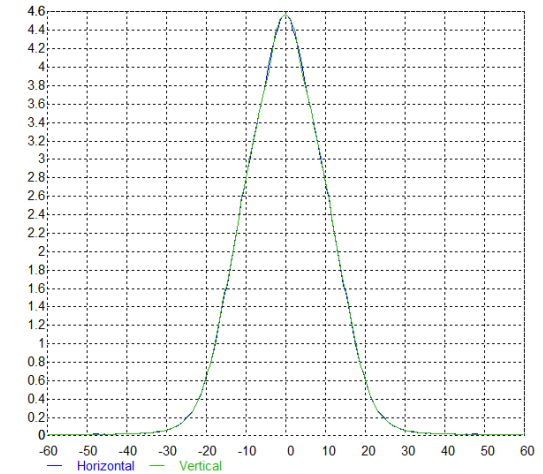
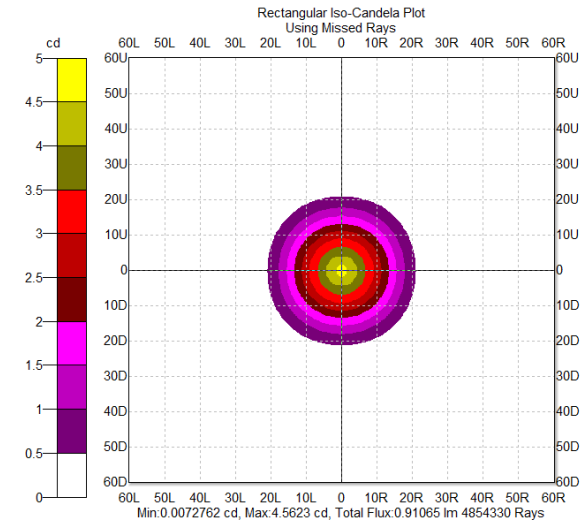
HADAR50M: Medium beam



Compatibility matrix

HADAR50M	LES 2,4 mm	LES 3,5 mm	LES 4,2 mm	LES 6 mm	LES 8,5 mm	LES 11 mm	LES 13 mm
FWHM (°)	26,2	25,6	25,6	25,8	26,8	28,1	29,5
FWTM (°)	37,3	38,6	39,4	42,6	47,1	51,4	55,4
Efficacy (cd/lm)	4,6	4,6	4,5	4	3,4	2,8	2,4
LOR	89,8 %	91,6 %	90,3%	88,3 %	91,6 %	89,5 %	87,8 %

[Visit the product page on our website](#)



Intensity pattern

LED: Citizen CLU703 (6mm)

Holder versions:

HADAR50H10* - Bender+Wirth and existing LLH66B bases

HADAR50H40* - Bender+Wirth & BJB Φ35mm compatible

HADAR50H90* - Hekla compatible

Holder colors: * 0 is clear, 1 is white, 2 is black

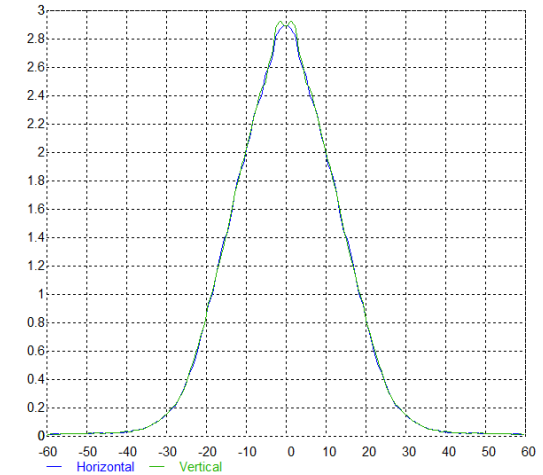
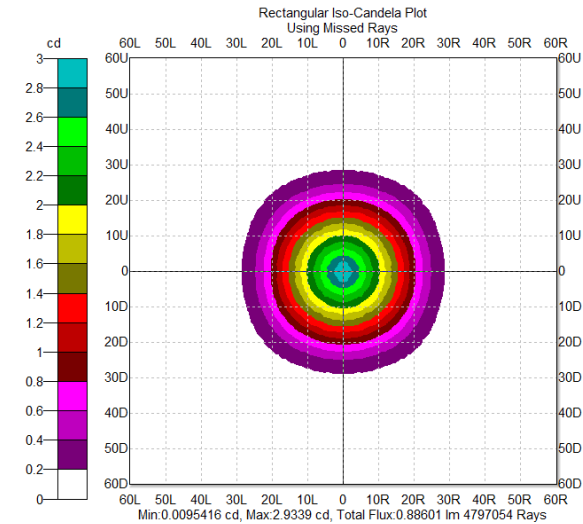
HADAR50W: Wide beam



Compatibility matrix

HADAR50W	LES 2,4 mm	LES 3,5 mm	LES 4,2 mm	LES 6 mm	LES 8,5 mm	LES 11 mm	LES 13 mm
FWHM (°)	35,3	34,2	33,3	31,8	31,9	32,3	32,8
FWTM (°)	50	51,2	51,7	53,3	56,2	59,2	61,9
Efficacy (cd/lm)	2,5	2,5	2,6	2,5	2,3	2	1,8
LOR	88,6 %	90,3 %	89,2 %	86,9 %	90,4 %	87,6 %	86,7 %

[Visit the product page on our website](#)



Intensity pattern

LED: Citizen CLU703 (6mm)

Holder versions:

HADAR50H10* - Bender+Wirth and existing LLH66B bases

HADAR50H40* - Bender+Wirth & BJB Φ35mm compatible

HADAR50H90* - Hekla compatible

Holder colors: * 0 is clear, 1 is white, 2 is black

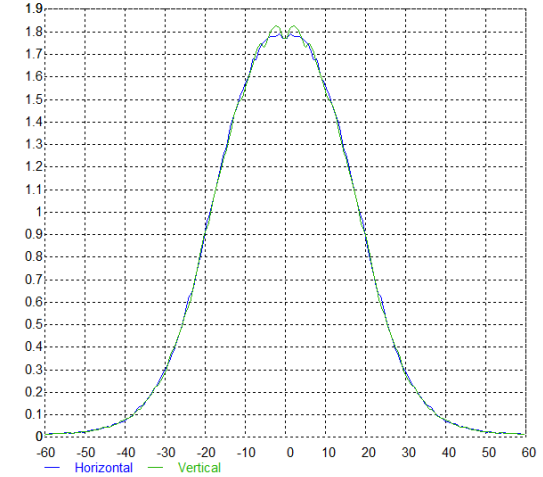
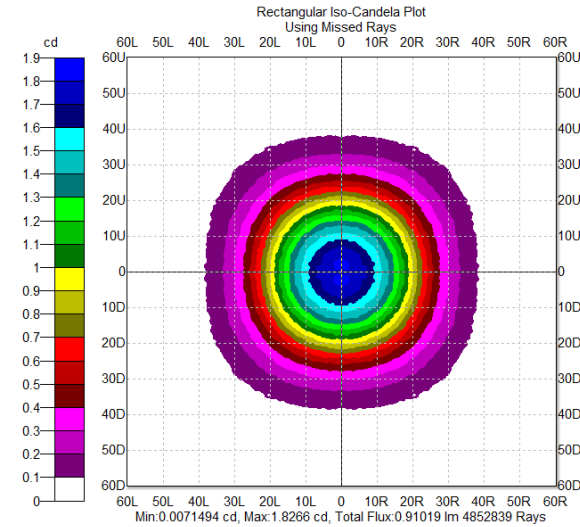
HADAR50L: Large beam



Compatibility matrix

HADAR50L	LES 2,4 mm	LES 3,5 mm	LES 4,2 mm	LES 6 mm	LES 8,5 mm	LES 11 mm	LES 14,5 mm
FWHM (°)	47,6	47,4	47,2	46,4	44,7	45,7	45,6
FWTM (°)	77,6	77,6	77,2	77,1	77,3	79,1	81,7
Efficacy (cd/lm)	1,1	1,1	1,1	1,1	1,2	1,1	1,1
LOR	86,5 %	88 %	86,6 %	84,4 %	88,1 %	86,4 %	85,1 %

[Visit the product page on our website](#)



Intensity pattern

LED: Citizen CLU703 (6mm)

Holder versions:

HADAR50H10* - Bender+Wirth and existing LLH66B bases

HADAR50H40* - Bender+Wirth & BJB Ø35mm compatible

HADAR50H90* - Hekla compatible

Holder colors: * 0 is clear, 1 is white, 2 is black

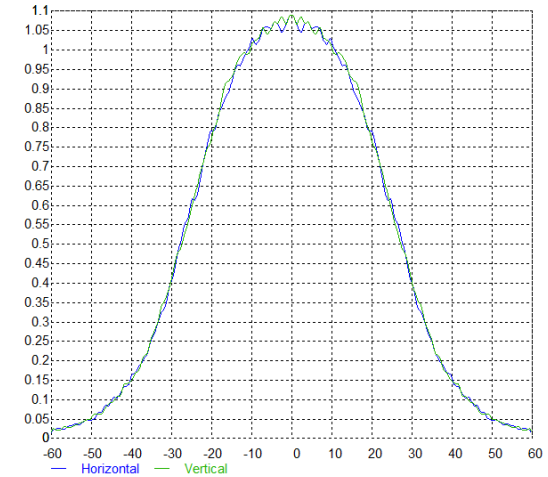
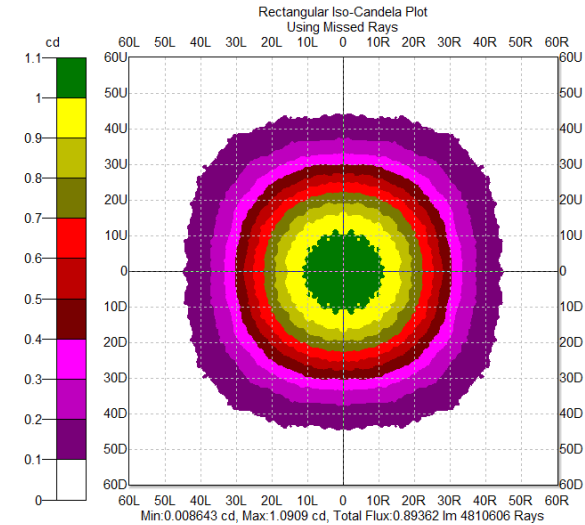
HADAR50V: Very Large beam



Compatibility matrix

HADAR50V	LES 2,4 mm	LES 3,5 mm	LES 4,2 mm	LES 6 mm	LES 8,5 mm	LES 11 mm	LES 13 mm
FWHM (°)	57	56,7	56,5	56,2	54,9	54,7	53,7
FWTM (°)	89,6	89,4	89,8	89,8	89,9	91,8	92,3
Efficacy (cd/lm)	0,8	0,8	0,8	0,8	0,9	0,8	0,8
LOR	86,8 %	88 %	86,3 %	84,2 %	87,8 %	86,3 %	85,1 %

[Visit the product page on our website](#)



Intensity pattern

LED: Citizen CLU703 (6mm)

Holder versions:

HADAR50H10* - Bender+Wirth and existing LLH66B bases

HADAR50H40* - Bender+Wirth & BJB Φ35mm compatible

HADAR50H90* - Hekla compatible

Holder colors: * 0 is clear, 1 is white, 2 is black

HADAR50Z: Zoom beam



* Top lens is integrated to the lens holder, with free rotation movement of 14°

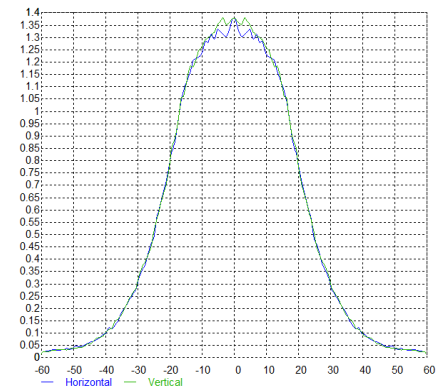
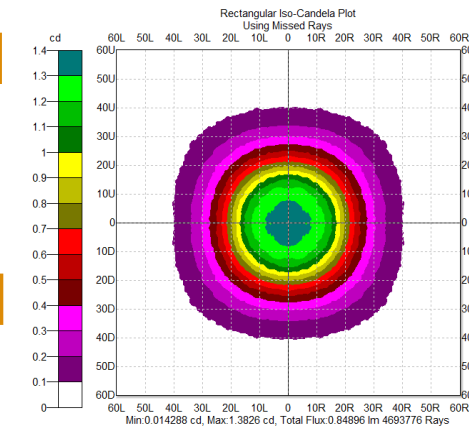
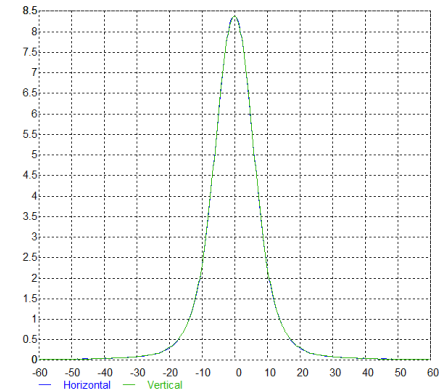
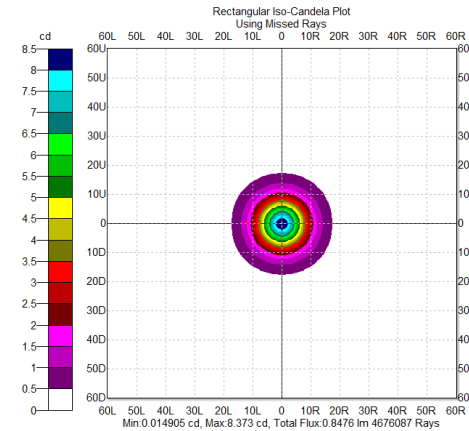
Compatibility matrix

HADAR50Z narrow

	LES 2,4 mm	LES 3,3 mm	LES 4,2 mm	LES 6 mm	LES 8,5 mm	LES 11 mm	LES 14,5 mm
FWHM (°)	11,6	12,3	12,9	14,7	17,5	20	22,9
FWTM (°)	21,6	24	22,5	29,9	36	41,8	47,9
Efficacy (cd/lm)	12,9	11,1	9,8	7	4,9	3,5	2,6
LOR	84,3 %	86,8 %	85,1%	82,4 %	86,1 %	83,6 %	81,2 %

HADAR50Z wide

	LES 2,4 mm	LES 3,3 mm	LES 4,2 mm	LES 6 mm	LES 8,5 mm	LES 11 mm	LES 14,5 mm
FWHM (°)	43,4	44,3	44,6	45	45,8	46,2	46,6
FWTM (°)	69,8	70,8	71,3	72,5	75	77,3	80,6
Efficacy (cd/lm)	1,4	1,3	1,3	1,2	1,1	1	1
LOR							



LED: Citizen CLU703 (6mm)

Holder versions:

HADAR50H10* - Bender+Wirth and existing LLH66B bases

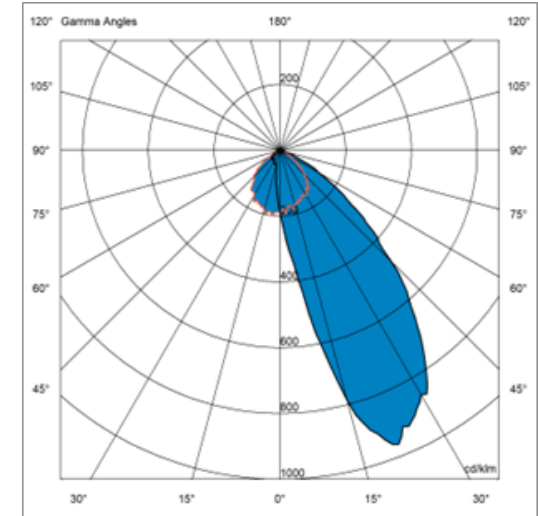
HADAR50H40* - Bender+Wirth & BJB Φ35mm compatible

HADAR50H90* - Hekla compatible

Holder colors: * 0 is clear, 1 is white, 2 is black

[Visit the product page on our website](#)

HADAR50A: Wall washer beam



Compatibility matrix

Intensity pattern

HADAR50A wall washer	LES 2,4 mm	LES 3,5 mm	LES 4,2 mm	LES 6 mm	LES 8,5 mm	LES 11 mm	LES 13 mm
FWHM (°)	Asym°	Asym°	Asym°	Asym°	Asym°	Asym°	Asym°
FWTM (°)	Asym°	Asym°	Asym°	Asym°	Asym°	Asym°	Asym°
Efficacy (cd/lm)	1,36	1,24	1,18	1,01	0,85	0,74	0,67
LOR	92,8 %	93,2 %	93,5 %	93,1 %	92,8 %	92,3 %	91,5 %

In Italic : simulated photometrical results

See next page for application info

[Visit the product page on our website](#)

Holder versions:

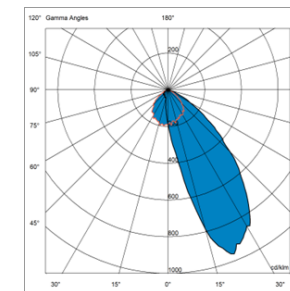
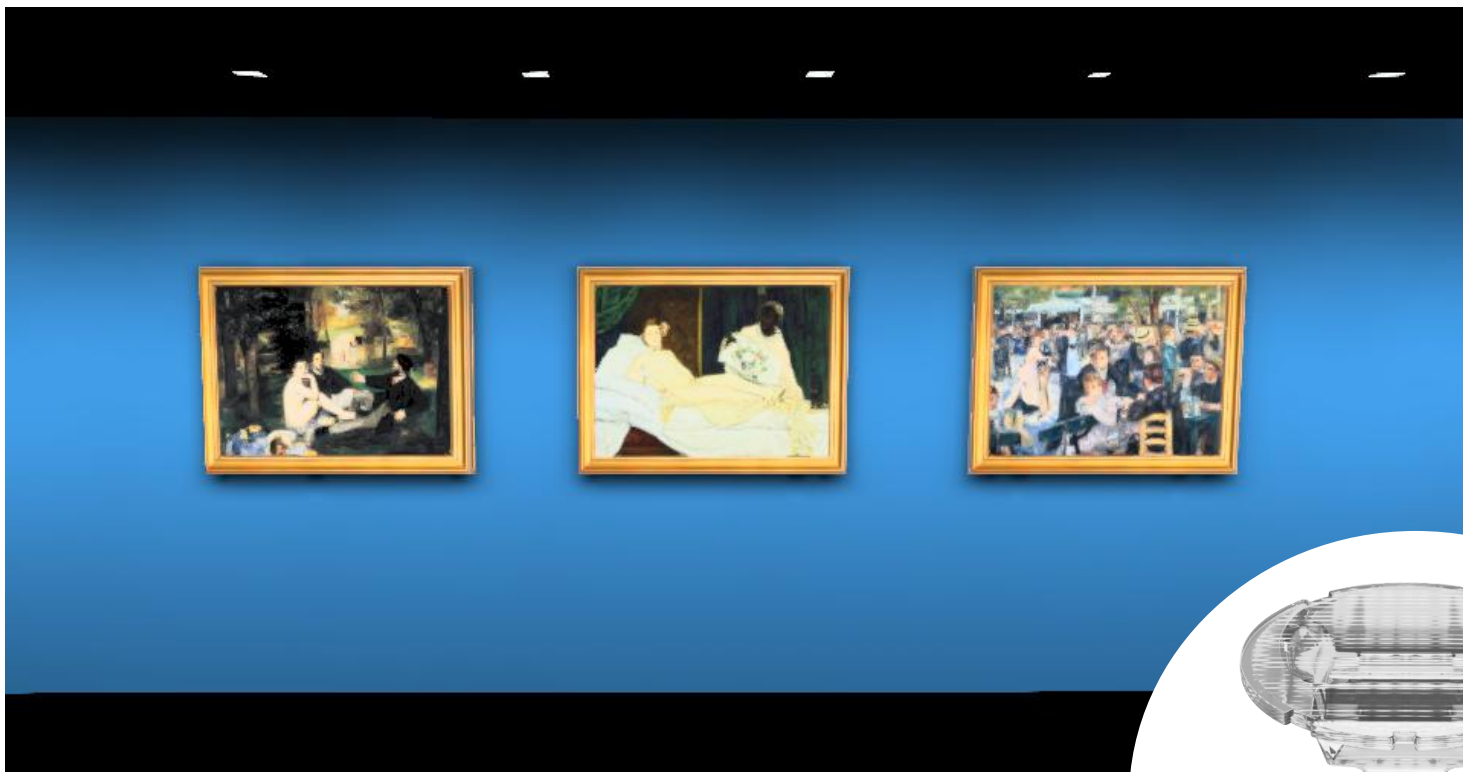
HADAR50HA10* - Bender+Wirth and existing LLH66B bases

HADAR50HA40* - Bender+Wirth & BJB Φ35mm compatible

HADAR50HA90* - Hekla compatible

Holder colors: * 0 is clear, 1 is white, 2 is black

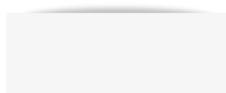
HADAR50A: Asymmetric beam



HADAR50A



HADAR50A is the best and most efficient **wall washer optic** in the market. (Typical **LOR: >91%**).
This optic provides an **excellent uniformity** across the wall, **light starting close to ceiling level** of the wall.
This well polished diamond turned optic, has **extremely low surface brightness (UGR <10 @ 1500 lumens)**



Rectangular beam



Flush-mounted integration

Holder versions:

HADAR50HA10* - Bender+Wirth and existing LLH66B bases

HADAR50HA40* - Bender+Wirth & BJB Φ 35mm compatible

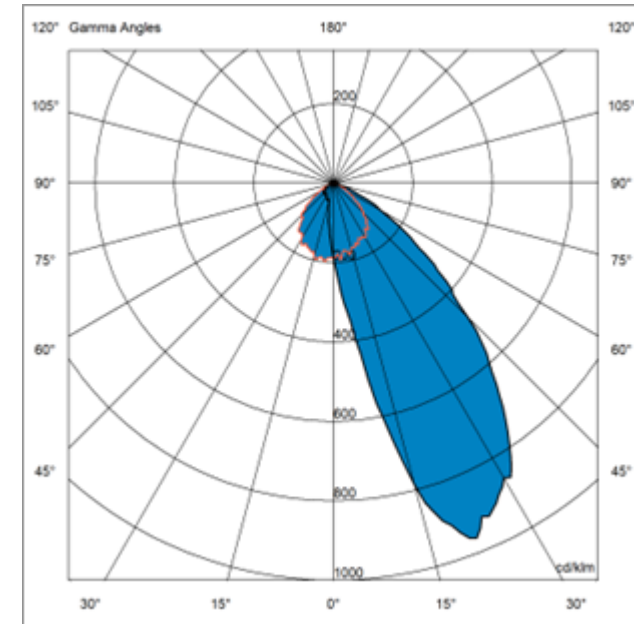
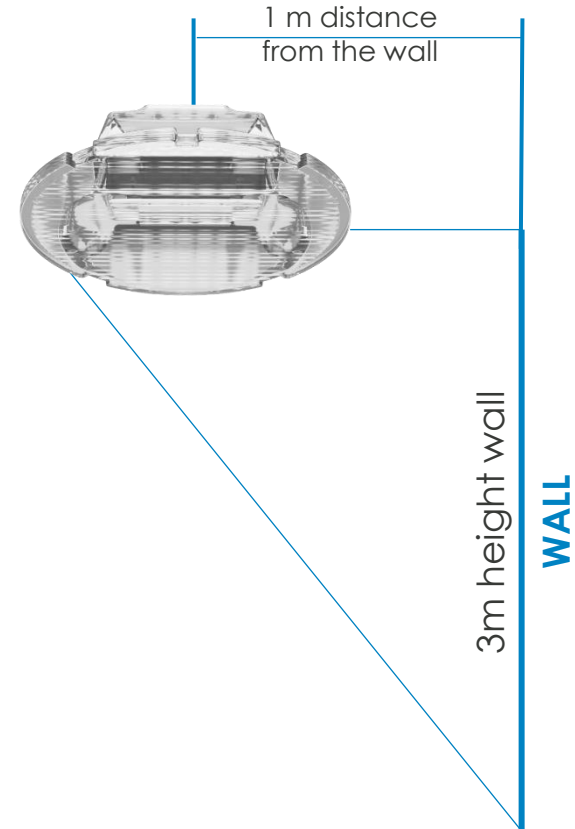
HADAR50HA90* - Hekla compatible

Holder colors: * 0 is clear, 1 is white, 2 is black

HADAR50A— Illumination pattern

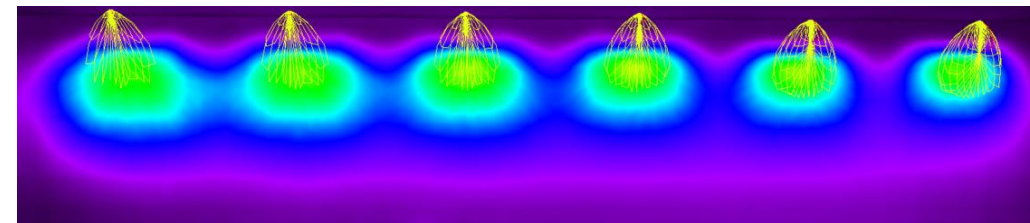
Installation example with HADAR50A

- Distance ratio from the wall: 1:3 of the height of the wall is recommended.
- Spacing: we recommend the spacing of the luminaires to be from 50cm to 100cm.



HADAR50A
LED : CLU703

**** Extremely consistent results between different LES sizes. ****



2.4mm LES

3.5mm LES

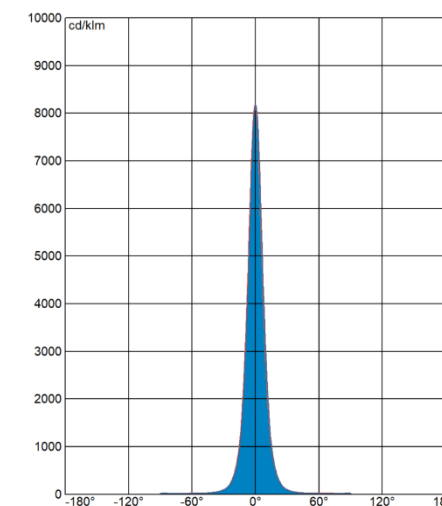
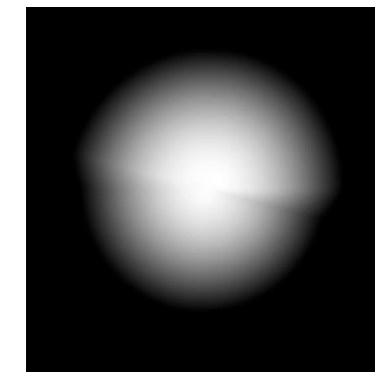
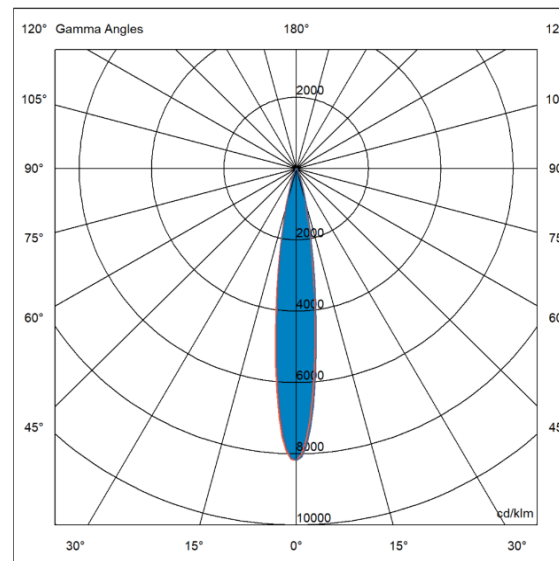
4.2mm LES

6mm LES

8.5mm LES

11mm LES

HADAR50WF Window: Frosted beam



Compatibility matrix

HADAR50WF	LES 4,2 mm	LES 6 mm	LES 8,5 mm	LES 11 mm
FWHM (°)	12.5	15.1	19.6	22.3
FWTM (°)	27.7	32.3	40.1	45.5
Efficacy (cd/lm)	10.2	7.4	4.5	3.4
LOR	91 %	90 %	89 %	87 %

Intensity pattern
LED: Citizen CLU703 (6mm)

Holder versions:

HADAR50H10* - Bender+Wirth and existing LLH66B bases

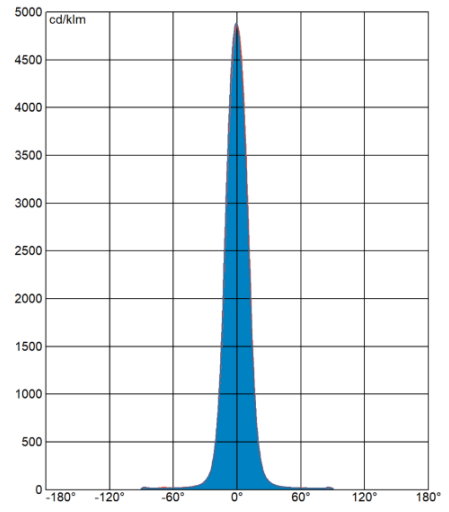
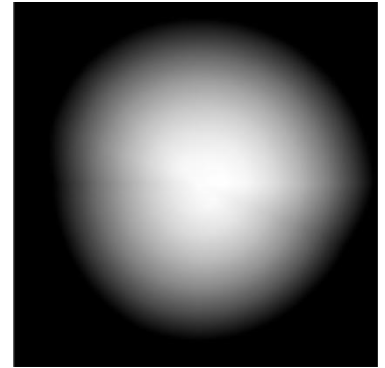
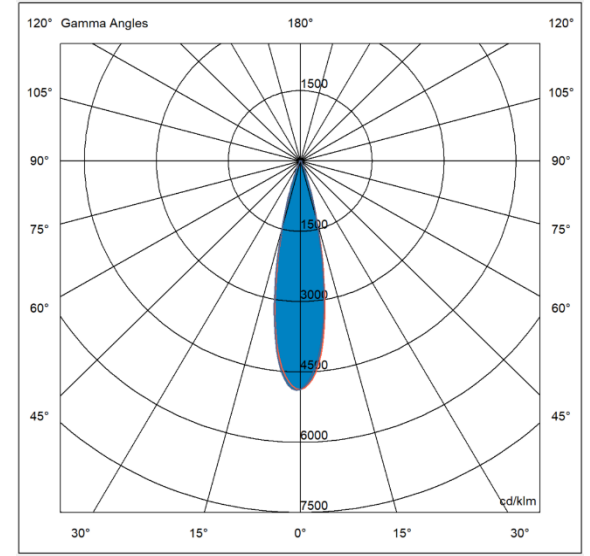
HADAR50H40* - Bender+Wirth & BJB Φ35mm compatible

HADAR50H90* - Hekla compatible

Holder colors: * 0 is clear, 1 is white, 2 is black

[Visit the product page](#) on our website

HADAR50WM Window: Medium beam



Compatibility matrix

HADAR50WM	LES 4,2 mm	LES 6 mm	LES 8,5 mm	LES 11 mm
FWHM (°)	23.4	23.1	25.1	27.2
FWTM (°)	38.2	40.1	45.9	51.4
Efficacy (cd/lm)	4.6	4.4	3.4	2.6
LOR	91 %	90 %	89 %	86 %

Intensity pattern

LED: Citizen CLU703 (6mm)

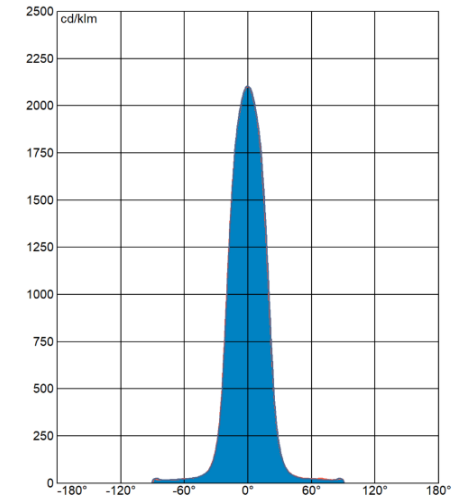
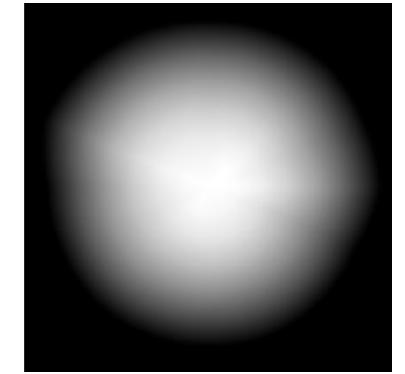
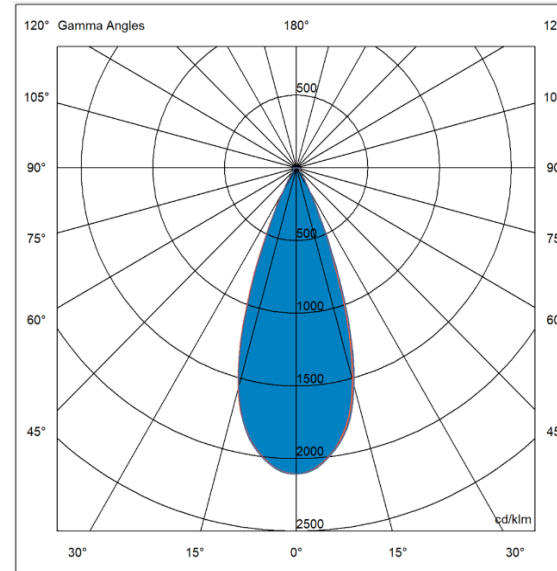
Holder versions:

- HADAR50H10*** - Bender+Wirth and existing LLH66B bases
- HADAR50H40*** - Bender+Wirth & BJB Φ35mm compatible
- HADAR50H90*** - Hekla compatible

Holder colors: * 0 is clear, 1 is white, 2 is black

[Visit the product page](#) on our website

HADAR50WW Window: Wide beam



Compatibility matrix

HADAR50WW	LES 4,2 mm	LES 6 mm	LES 8,5 mm	LES 11 mm
FWHM (°)	29.6	29.4	31.0	32.1
FWTM (°)	45.6	47.1	52.8	57.5
Efficacy (cd/lm)	3.2	3.0	2.4	2
LOR	91 %	90 %	88 %	85 %

Intensity pattern

LED: Citizen CLU703 (6mm)

Holder versions:

HADAR50H10* - Bender+Wirth and existing LLH66B bases

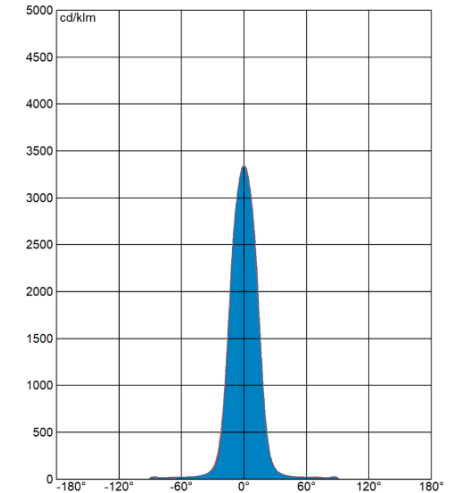
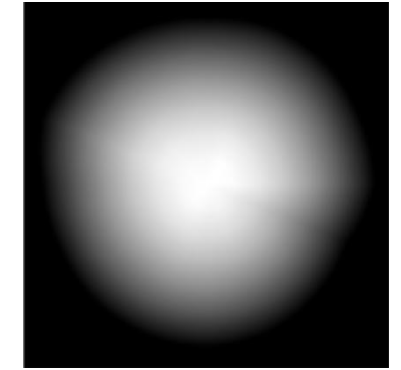
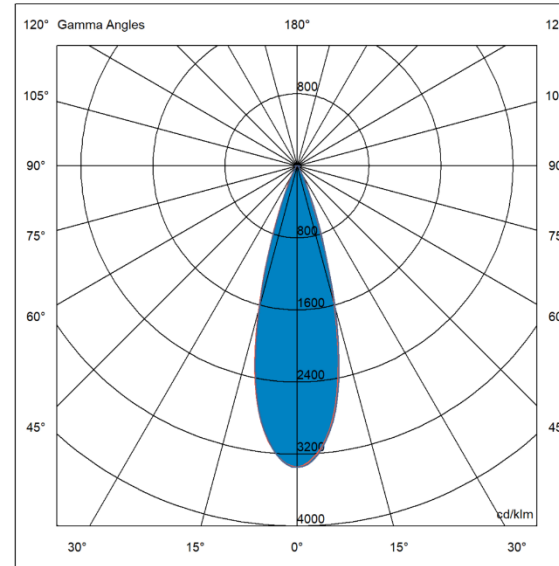
HADAR50H40* - Bender+Wirth & BJB Φ35mm compatible

HADAR50H90* - Hekla compatible

Holder colors: * 0 is clear, 1 is white, 2 is black

[Visit the product page](#) on our website

HADAR50WL Window: Large beam



Compatibility matrix

HADAR50WL	LES 4,2 mm	LES 6 mm	LES 8,5 mm	LES 11 mm
FWHM (°)	39.2	38.8	40.7	41.8
FWTM (°)	56.7	58.0	63.8	68.6
Efficacy (cd/lm)	2.0	1.9	1.6	1.4
LOR	91 %	90 %	88 %	85 %

Intensity pattern

LED: Citizen CLU703 (6mm)

Holder versions:

HADAR50H10* - Bender+Wirth and existing LLH66B bases

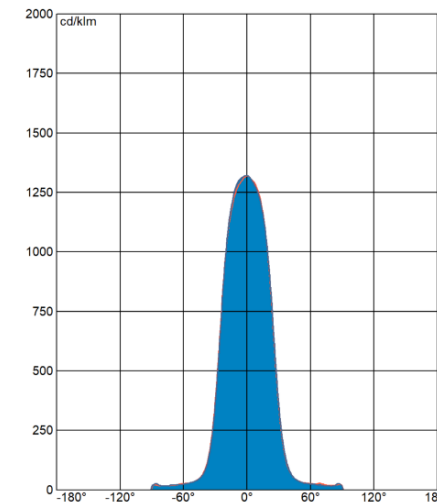
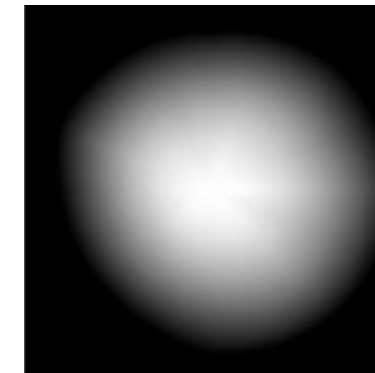
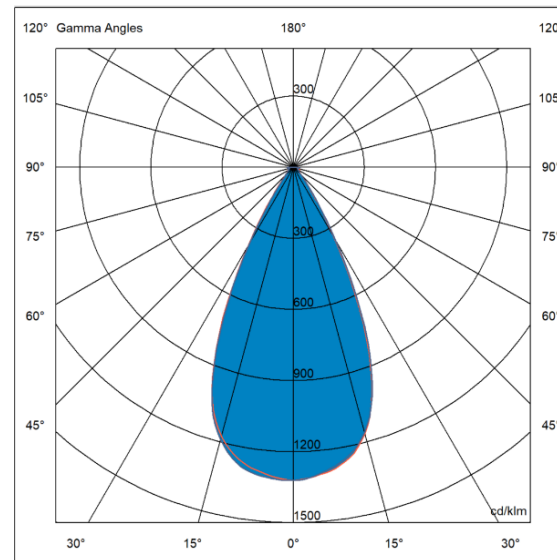
HADAR50H40* - Bender+Wirth & BJB Φ35mm compatible

HADAR50H90* - Hekla compatible

Holder colors: * 0 is clear, 1 is white, 2 is black

[Visit the product page](#) on our website

HADAR50WV Window: Very Large beam



Compatibility matrix

HADAR50WV	LES 4,2 mm	LES 6 mm	LES 8,5 mm	LES 11 mm
FWHM (°)	51.6	50.4	52.4	53.9
FWTM (°)	71.3	71.8	77.9	82.7
Efficacy (cd/lm)	1.2	1.2	1.0	0.9
LOR	90 %	89 %	88 %	85 %

Intensity pattern

LED: Citizen CLU703 (6mm)

Holder versions:

HADAR50H10* - Bender+Wirth and existing LLH66B bases

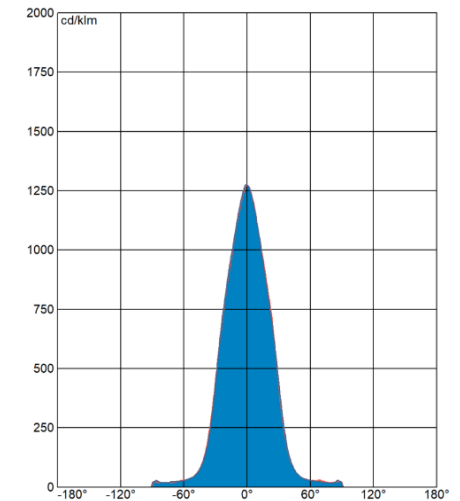
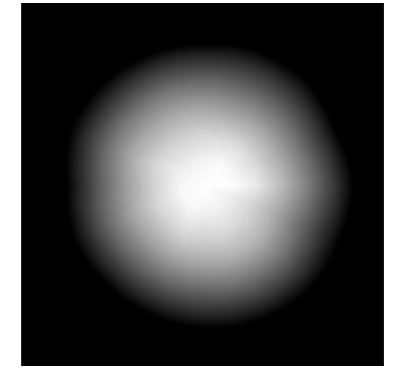
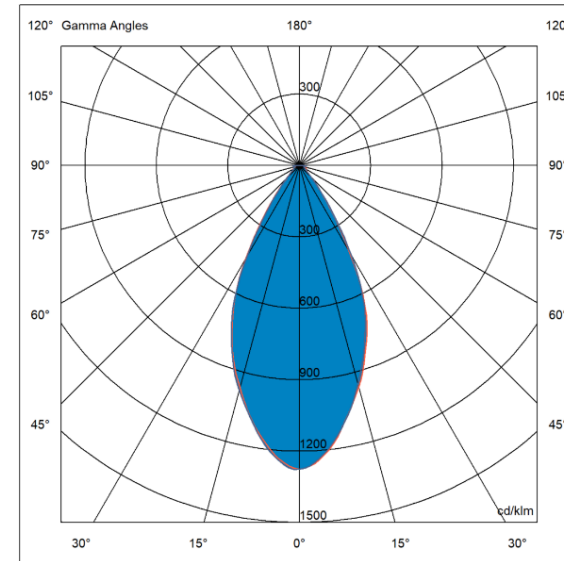
HADAR50H40* - Bender+Wirth & BJB Φ35mm compatible

HADAR50H90* - Hekla compatible

Holder colors: * 0 is clear, 1 is white, 2 is black

[Visit the product page](#) on our website

HADAR50WS Window: Super wide beam



Compatibility matrix

HADAR50WL	LES 4,2 mm	LES 6 mm	LES 8,5 mm	LES 11 mm
FWHM (°)	51.6	50.3	53.9	56.0
FWTM (°)	78.7	78.9	85.7	91.0
Efficacy (cd/lm)	1.2	1.1	0.9	0.8
LOR	90 %	89 %	88 %	84 %

Intensity pattern

LED: Citizen CLU703 (6mm)

Holder versions:

HADAR50H10* - Bender+Wirth and existing LLH66B bases

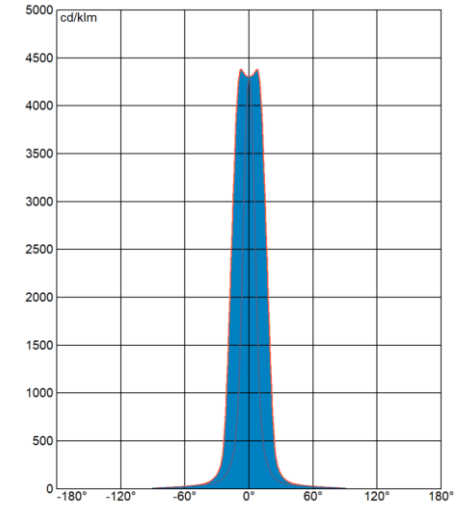
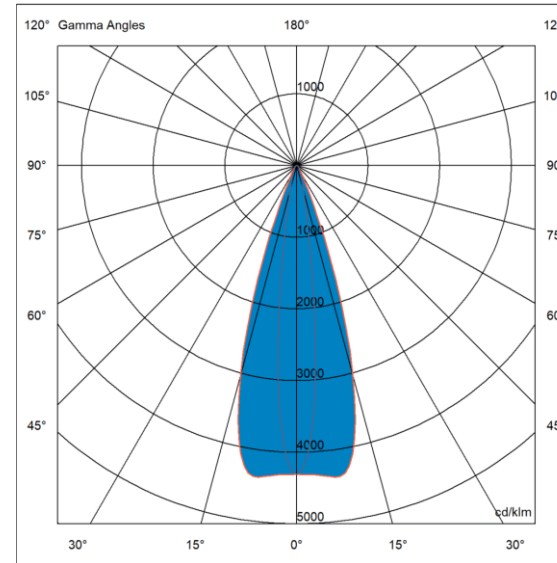
HADAR50H40* - Bender+Wirth & BJB Φ35mm compatible

HADAR50H90* - Hekla compatible

Holder colors: * 0 is clear, 1 is white, 2 is black

[Visit the product page](#) on our website

HADAR50WEN Window: Elliptical Narrow beam



Compatibility matrix

HADAR50WEN	LES 3,5 mm	LES 6 mm	LES 9 mm	LES 12 mm
FWHM (°)	9,1 X 33,9	13,4 X 34,9	16,9 X 36,3	21,7 X 37,9
FWTM (°)	18,1 X 42	27,5 X 48,1	33,2 X 53,6	42,3 X 60,5
Efficacy (cd/lm)	6,73	4,38	3,26	2,4
LOR	85,5 %	89 %	84,9 %	85 %

Intensity pattern

LED: Citizen CLU703 (6mm)

Holder versions:

HADAR50H10* - Bender+Wirth and existing LLH66B bases

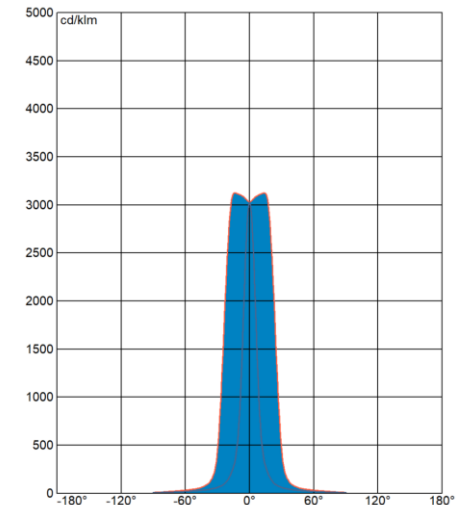
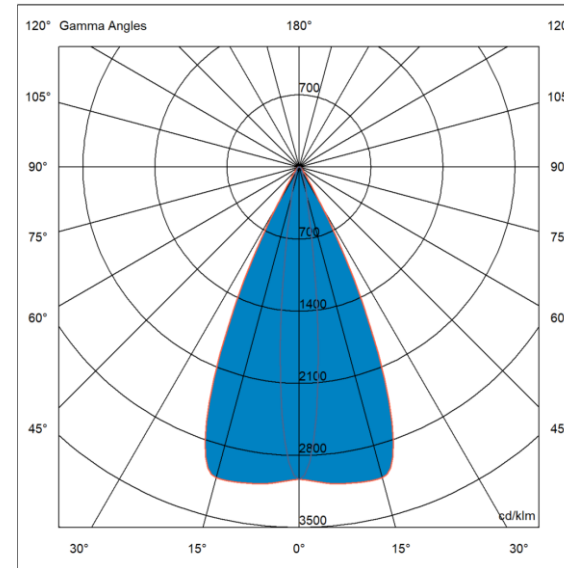
HADAR50H40* - Bender+Wirth & BJB Φ35mm compatible

HADAR50H90* - Hekla compatible

Holder colors: * 0 is clear, 1 is white, 2 is black

[Visit the product page](#) on our website

HADAR50WEW Window: Elliptical Wide beam



Compatibility matrix

HADAR50WEW	LES 3,5 mm	LES 6 mm	LES 9 mm	LES 12 mm
FWHM (°)	9,2 X 48,8	13,5 X 49,2	17,1 X 50,8	22 X 52,5
FWTM (°)	18,6 X 56,6	28,7 X 62,4	34,2 X 68,3	44,2 X 76
Efficacy (cd/lm)	4,69	3,12	2,36	1,7
LOR	85,4 %	88,5 %	84,6 %	84,6 %

Intensity pattern

LED: Citizen CLU703 (6mm)

Holder versions:

HADAR50H10* - Bender+Wirth and existing LLH66B bases

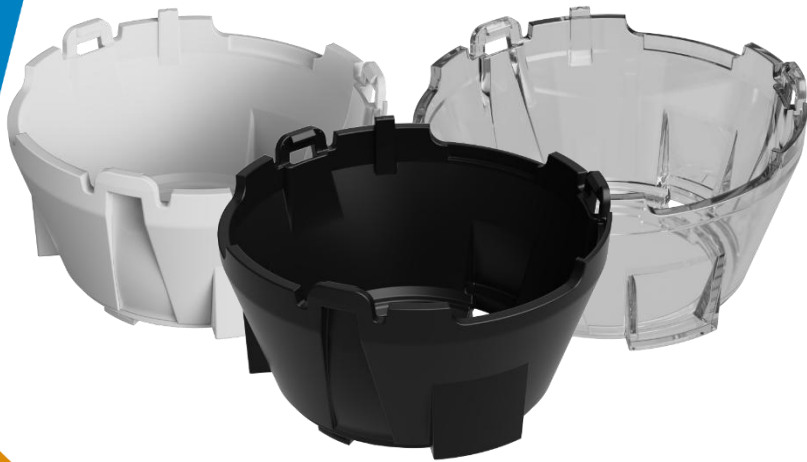
HADAR50H40* - Bender+Wirth & BJB Φ35mm compatible

HADAR50H90* - Hekla compatible

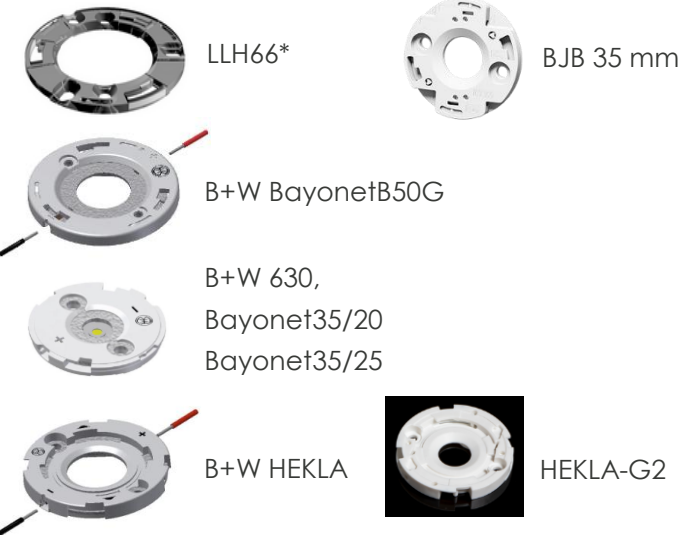
Holder colors: * 0 is clear, 1 is white, 2 is black

[Visit the product page](#) on our website

HADAR50: lens holders & compatibility



Holder reference	Compatibility
HADAR50H10* HADAR50HA10*	Gaggione - LLH66*
HADAR50H10* HADAR50HA10*	B+W BayonetB50G B+W 4xx / TypeZ1 (with LLH66*)
HADAR50H40* HADAR50HA40*	BJB 35 mm & B+W Bayonet35/20 & B+W Bayonet35/25
HADAR50H90* HADAR50HA90*	HEKLA-K HEKLA-G2 B+W HEKLA



* : colors : 0 is clear, 1 is white, 2 is black
Other colors might be available, please [contact us](#) if needed.

Holder reference	Connector/Base	Product code	Diameter	Screw distance	PCB footprint	COB (LES)	Remarks
HADAR50H10* / HADAR50HA10*	GAGGIONE	LLH66*	∅47	35 mm	All		B+W, TE, Bridgelux, Xicato
HADAR50H10* / HADAR50HA10*	Bender+Wirth	630, BayonetB50G	∅50	35 mm	All		
HADAR50H10* / HADAR50HA10*	Bender+Wirth	LLH66 + 4XX / Type Z1	∅50	35 mm			
HADAR50H40* / HADAR50HA40*	Bender+Wirth	Bayonet35/20	∅32	20 mm			
HADAR50H40* / HADAR50HA40*	Bender+Wirth	Bayonet35/25	∅35	25 mm			
HADAR50H40* / HADAR50HA40*	BJB	47.360.1010.50	∅35	25 mm	19 x 19	up to 14.5	up to CLL03x
HADAR50H40* / HADAR50HA40*	BJB	47.360.1020.50	∅35	25 mm	13.5 x 13.5	up to 12.2	
HADAR50H90* / HADAR50HA90*	LEDiL	Hekla-G2-H	∅44	35 mm	16 x 19	14	
HADAR50H90* / HADAR50HA90*	LEDiL	Hekla-G2-I	∅44	35 mm	19 x 19	14.5	up to CLL03x
HADAR50H90* / HADAR50HA90*	LEDiL	Hekla-G2-C	∅44	35 mm	13.5 x 13.5	12.2	
HADAR50H90* / HADAR50HA90*	LEDiL	Hekla-G2-0	∅44	35 mm	15.85 x 15.85	12.2	
HADAR50H90* / HADAR50HA90*	LEDiL	Hekla-G2-J	∅44	35 mm	13.35 x 13.35	7.5	
HADAR50H90* / HADAR50HA90*	LEDiL	Hekla-K	∅44	35 mm	B+W Type L8	many	

HADAR50: set (lens + holder assembled)

Holder color	Compatibility	Narrow HADAR50N	Medium HADAR50M	Wide HADAR50W	Large HADAR50L	Very Large HADAR50V	Color HADAR50C	Zoom HADAR50Z	Wall Washer HADAR50A
clear holder	LLH66 + bender & wirth	SHADAR50N100	SHADAR50M100	SHADAR50W100	SHADAR50L100	SHADAR50V100	SHADAR50C100	SHADAR50Z100	SHADAR50A100
white holder	LLH66 + bender & wirth	SHADAR50N101	SHADAR50M101	SHADAR50W101	SHADAR50L101	SHADAR50V101	SHADAR50C101	SHADAR50Z101	SHADAR50A101
black holder	LLH66 + bender & wirth	SHADAR50N102	SHADAR50M102	SHADAR50W102	SHADAR50L102	SHADAR50V102	SHADAR50C102	SHADAR50Z102	SHADAR50A102
clear holder	BJB 35 solderless connector	SHADAR50N400	SHADAR50M400	SHADAR50W400	SHADAR50L400	SHADAR50V400	SHADAR50C400	SHADAR50Z400	SHADAR50A400
white holder	BJB 35 solderless connector	SHADAR50N401	SHADAR50M401	SHADAR50W401	SHADAR50L401	SHADAR50V401	SHADAR50C401	SHADAR50Z401	SHADAR50A401
black holder	BJB 35 solderless connector	SHADAR50N402	SHADAR50M402	SHADAR50W402	SHADAR50L402	SHADAR50V402	SHADAR50C402	SHADAR50Z402	SHADAR50A402
clear holder	HEKLA-K and HEKLA-G2	SHADAR50N900	SHADAR50M900	SHADAR50W900	SHADAR50L900	SHADAR50V900	SHADAR50C900	SHADAR50Z900	SHADAR50A900
white holder	HEKLA-K and HEKLA-G2	SHADAR50N901	SHADAR50M901	SHADAR50W901	SHADAR50L901	SHADAR50V901	SHADAR50C901	SHADAR50Z901	SHADAR50A901
black holder	HEKLA-K and HEKLA-G2	SHADAR50N902	SHADAR50M902	SHADAR50W902	SHADAR50L902	SHADAR50V902	SHADAR50C902	SHADAR50Z902	SHADAR50A902

Other colors might be available, please [contact us](#) if needed.

HADAR50: set (lens + holder + window)

Holder color	Compatibility	Frosted Window HADAR50WF	Medium Window HADAR50WM	Wide Window HADAR50WW	Large Window HADAR50WL	Very Large Window HADAR50WV	Super Wide Window HADAR50WS
clear holder	LLH66 + Bender & Wirth	SHADAR50NWF100	SHADAR50NWM100	SHADAR50NWW100	SHADAR50NWL100	SHADAR50N WV100	SHADAR50NWS100
white holder	LLH66 + Bender & Wirth	SHADAR50NWF101	SHADAR50NWM101	SHADAR50NWW101	SHADAR50NWL101	SHADAR50N WV101	SHADAR50NWS101
black holder	LLH66 + Bender & Wirth	SHADAR50NWF102	SHADAR50NWM102	SHADAR50NWW102	SHADAR50NWL102	SHADAR50N WV102	SHADAR50NWS102
clear holder	BJB 35 solderless connector	SHADAR50NWF400	SHADAR50NWM400	SHADAR50NWW400	SHADAR50NWL400	SHADAR50N WV400	SHADAR50NWS400
white holder	BJB 35 solderless connector	SHADAR50NWF401	SHADAR50NWM401	SHADAR50NWW401	SHADAR50NWL401	SHADAR50N WV401	SHADAR50NWS401
black holder	BJB 35 solderless conenctor	SHADAR50NWF402	SHADAR50NWM402	SHADAR50NWW402	SHADAR50NWL402	SHADAR50N WV402	SHADAR50NWS402
clear holder	HEKLA-K and HEKLA-G2	SHADAR50NWF900	SHADAR50NWM900	SHADAR50NWW900	SHADAR50NWL900	SHADAR50N WV900	SHADAR50NWS900
white holder	HEKLA-K and HEKLA-G2	SHADAR50NWF901	SHADAR50NWM901	SHADAR50NWW901	SHADAR50NWL901	SHADAR50N WV901	SHADAR50NWS901
black holder	HEKLA-K and HEKLA-G2	SHADAR50NWF902	SHADAR50NWM902	SHADAR50NWW902	SHADAR50NWL902	SHADAR50N WV902	SHADAR50NWS902

Holder color	Compatibility	Elliptical Narrow HADAR50WEN	Elliptical Wide HADAR50WEW
clear holder	LLH66 + Bender & Wirth	SHADAR50NWEN100	SHADAR50NWEW100
white holder	LLH66 + Bender & Wirth	SHADAR50NWEN101	SHADAR50NWEW101
black holder	LLH66 + Bender & Wirth	SHADAR50NWEN102	SHADAR50NWEW102
clear holder	BJB 35 solderless connector	SHADAR50NWEN400	SHADAR50NWEW400
white holder	BJB 35 solderless connector	SHADAR50NWEN401	SHADAR50NWEW401
black holder	BJB 35 solderless conenctor	SHADAR50NWEN402	SHADAR50NWEW402
clear holder	HEKLA-K and HEKLA-G2	SHADAR50NWEN900	SHADAR50NWEW900
white holder	HEKLA-K and HEKLA-G2	SHADAR50NWEN901	SHADAR50NWEW901
black holder	HEKLA-K and HEKLA-G2	SHADAR50NWEN902	SHADAR50NWEW902

Other colors might be available, please [contact us](#) if needed.

Code form standard range

LENS

OPTICAL

01: 16 mm
02: 16 mm
12: 16 mm
22: 16 mm RGBW
05: 32 mm
15: 32 mm
25: 32 mm RGBW
07: 35 mm
45: 45 mm UFO or VEGA
49: 45 mm RGBW
59: 45 mm RGBW gen 2
56: 67mm in PMMA
66: 67 mm in silicone
76: 67mm in silicone
67: 67 mm UFO

PRODUCT

LLC: Collimator
LH: Holder
LL: Linear collimator
LLR: Reflector
LS: Set
UFO: Ultra Flat Optic
VEGA : 45mm COB oriented
HADAR50: 70mm COB oriented
HADAR50: 50mm COB oriented
POLLUX7X1: Linear low UGR solution
AVIKA : Street Lighting

BEAM ANGLE

U/R/RF/UF: Ultra Narrow
N/NF: Narrow
M: Medium
W: Wide
X: Extra large
S: Super large
L: Large
V: Very large
E: Elliptical
Z: Zoom

MATERIAL

0 or nothing : PMMA
1: PC
2: PC anti-UV
7: Silicone

LLS01W01ABC001

ABC: Holder type according to LED package

COLORS & DECORS

0: Translucent
1: White
2: Black

ADHESIVE OPTION

1: Yes
Nothing: No

VERSION

TYPE

1: 16mm
2: 32mm
3: 3x16mm
4: 4x16mm
9: 45mm

HOLDER

Contact us

GAGGIONE SAS Headquarter

3, Rue de la Rolland
01460 Montréal la Cluse
France

☎ +33 4 74 76 12 66
@ contact@gaggione.com
🌐 www.optic-gaggione.com

Sales Team in GAGGIONE

Sonia Andres
Sales Director
France, Italy, Spain

@ s.andres@gaggione.com
☎ +33 607 37 20 28

Nicolas Golfier
France, Scandinavia,
Eastern and Northern Europe

@ n.golfier@gaggione.com
☎ +33 677 35 50 37

Thibaud Bourgeat
UK, Eastern Europe

@ t.bourgeat@gaggione.com
☎ +33 688 03 59 51

International Sales Offices

GAGGIONE Americas
Michael Pietro
12833 Surrey Ct.
Palos Park, IL
60464

@ m.pietro@gaggione.com
☎ +1 224 392 0087

GAGGIONE Canada & USA
Stephane Saindon
744 36th Avenue
Montreal, Quebec
H8T3L2

@ s.saindon@gaggione.com
☎ +1 514 928 2179

GAGGIONE Canada & USA
Nicolas Pourrain
744 36th Avenue
Montreal, Quebec
H8T3L2

@ n.pourrain@gaggione.com
☎ +1 438 989 5133

GAGGIONE DACH
Angelika Aigner
Chieminger Strasse 12A
83355 Grabenstätt
Germany

@ a.aigner@gaggione.com
☎ +49 8661 983 44 77

GAGGIONE Asia
Zhen Xu
Unit 1808, No. 8, Kuaiji Road,
Jintiandi International building,
Huangpu District,
Shanghai, 200021, China

@ z.xu@gaggione.com
☎ +86 136 5189 6981

Product Management & Business development

Joni MÄKI
Artunkuja 7,
24260 Salo
FINLAND

@ j.maki@gaggione.com
☎ +33 6 38 24 17 51



Newsletter



Linkedin